



[Knowledgebase](#) > [Design and Customizations](#) > [Selecting a new website theme or switching to a new template](#)

## Selecting a new website theme or switching to a new template

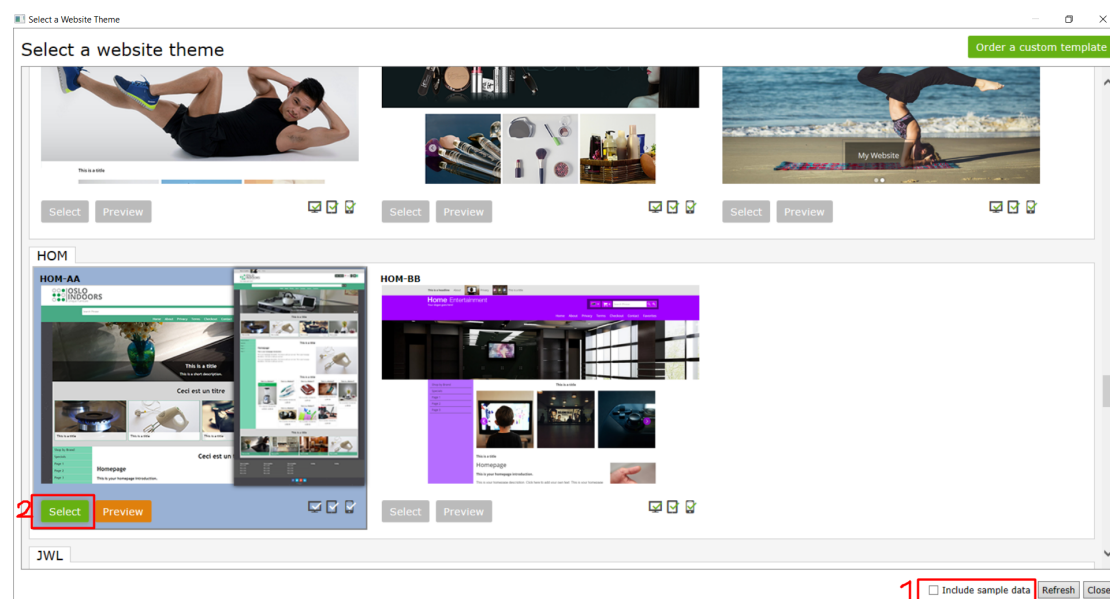
Elenor A. - 2021-09-06 - [Design and Customizations](#)

**Before changing to a newer theme, we recommend to always save a backup copy of your shop first in case you need to undo things or move a step back. To Save a backup copy of your shop, open your shop in ShopFactory and then click File -> Save AS -> enter shop-name\_<date> and then save. Save the backup copy of your shop to a safe place either to an external storage device or thumb drive.**

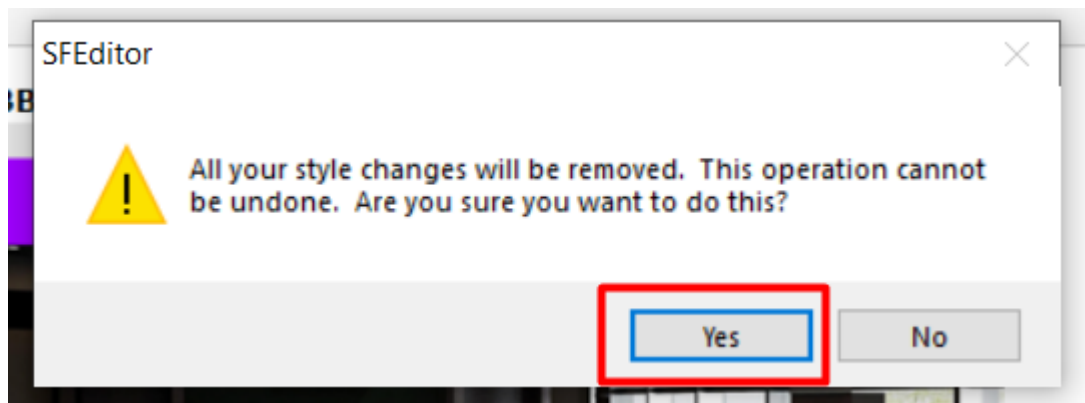
- Open your shop in ShopFactory
- Click Designer -> Select website theme
- You can select your preferred template such as HOM-AA

*Important: At the lower right corner, untick "Include Sample Data"*

- Click SELECT button



- SFEEditor prompt message appears, click Yes

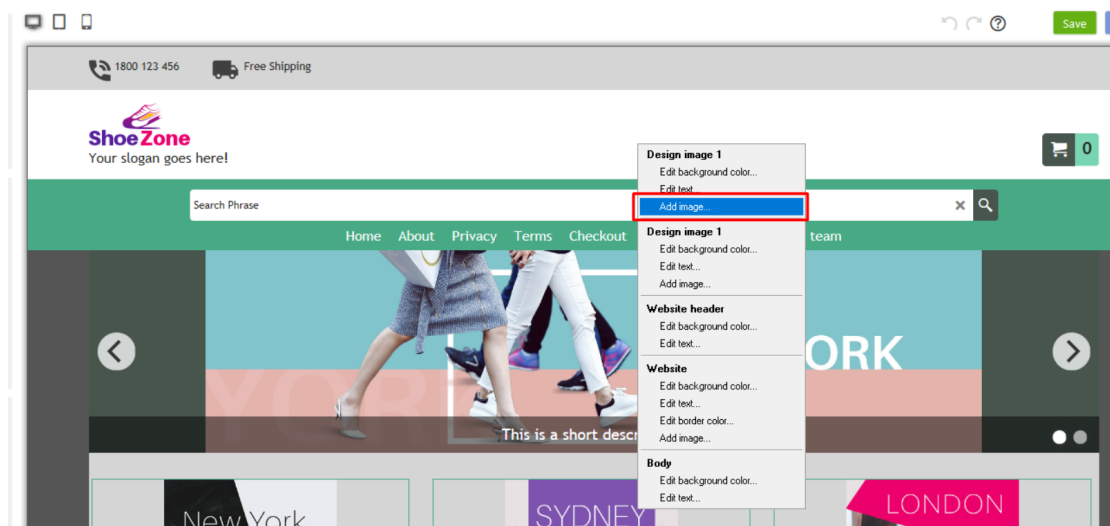


- Your old template will now be replaced with the V14 SFX theme

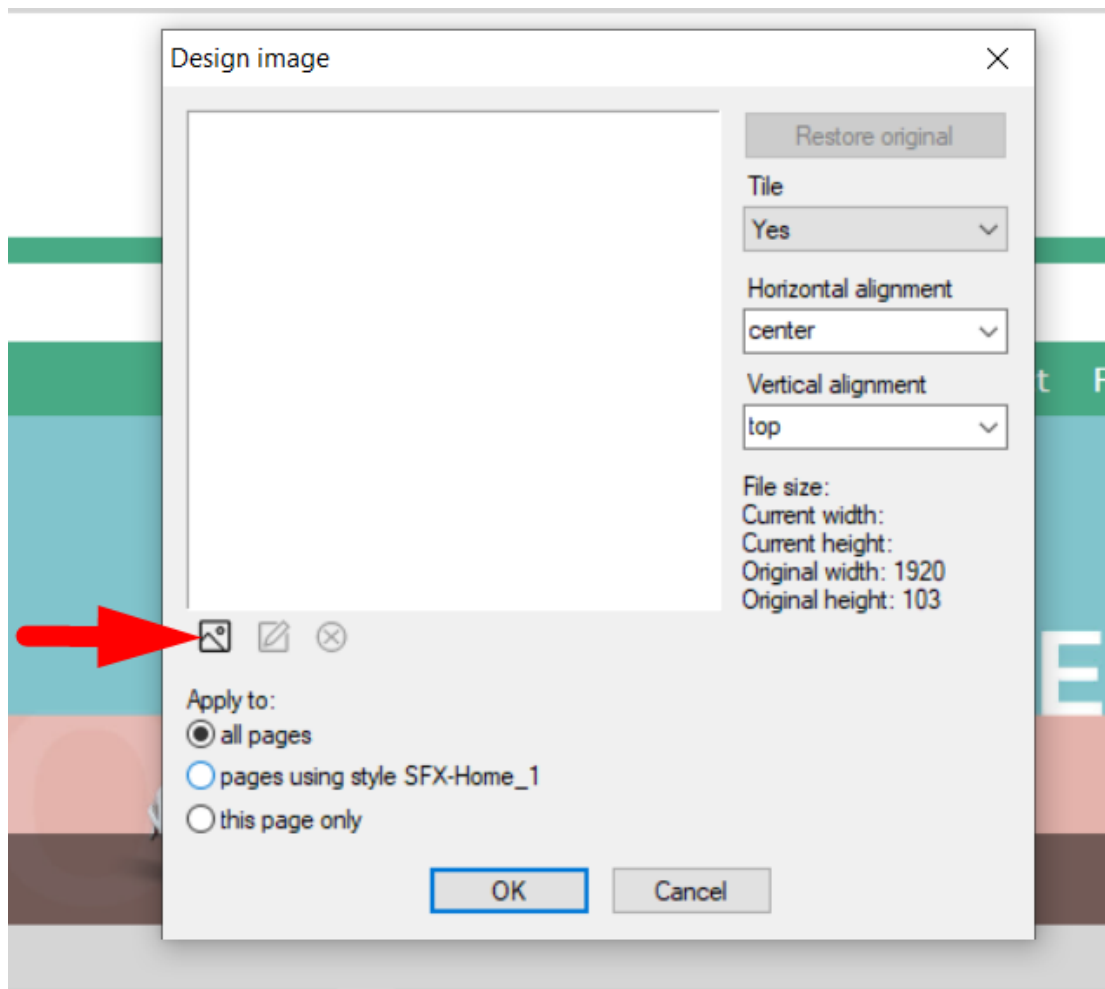
## **1. Change Design Image**

- Click Designer -> Customize Design

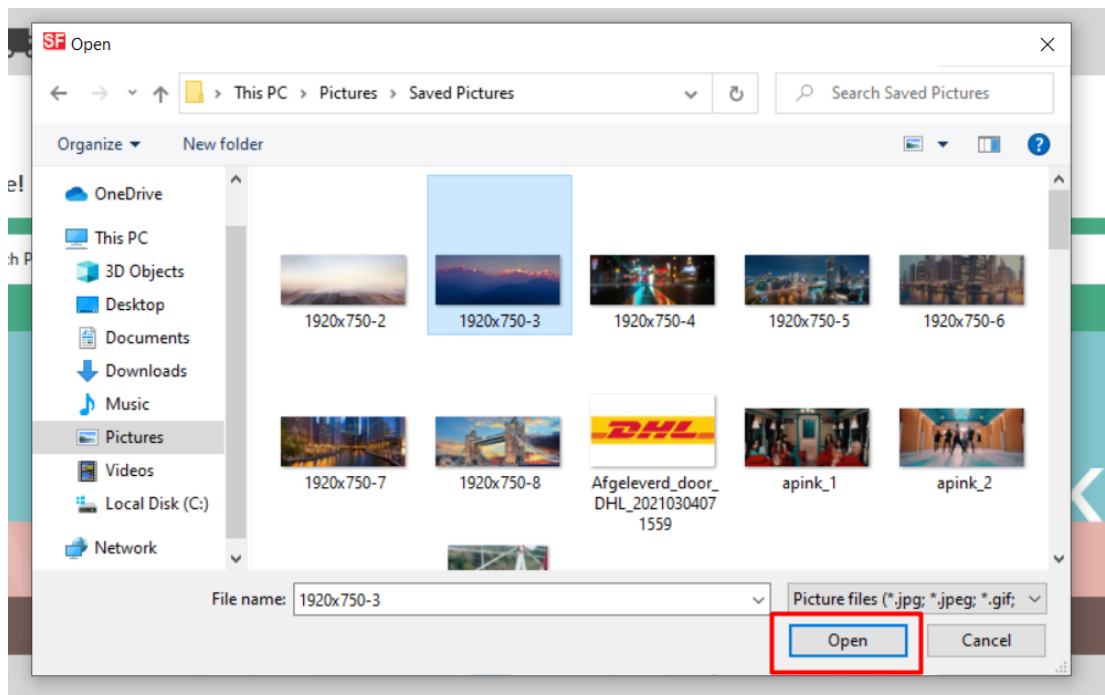
- Click over the header part -> Design Image 1 -> Add image



- Click Image icon



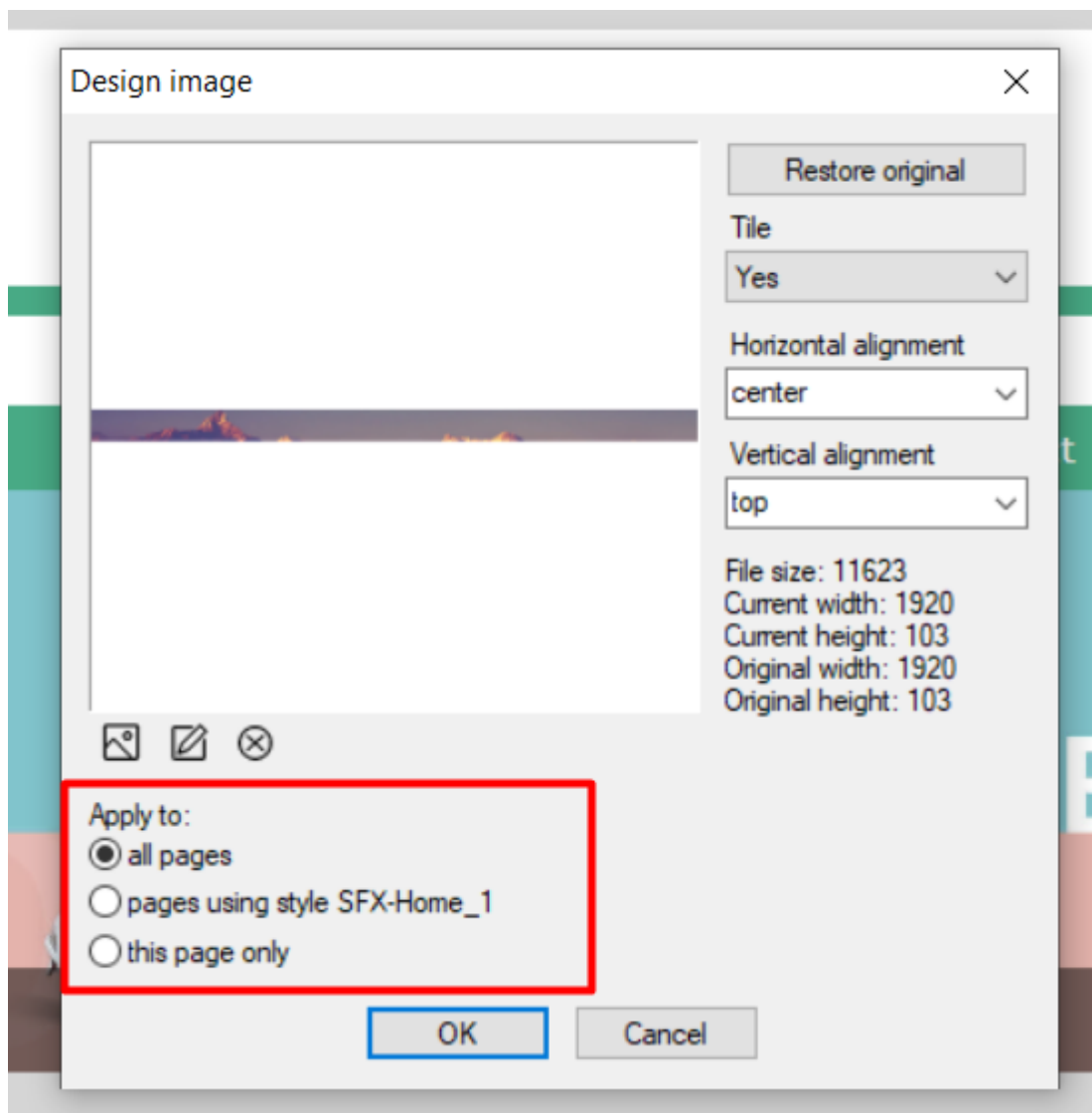
- Select the image that you want to use, click Open



- You have the option to apply it to the following:

- all pages

- pages using SFX-Home\_1
- this page only

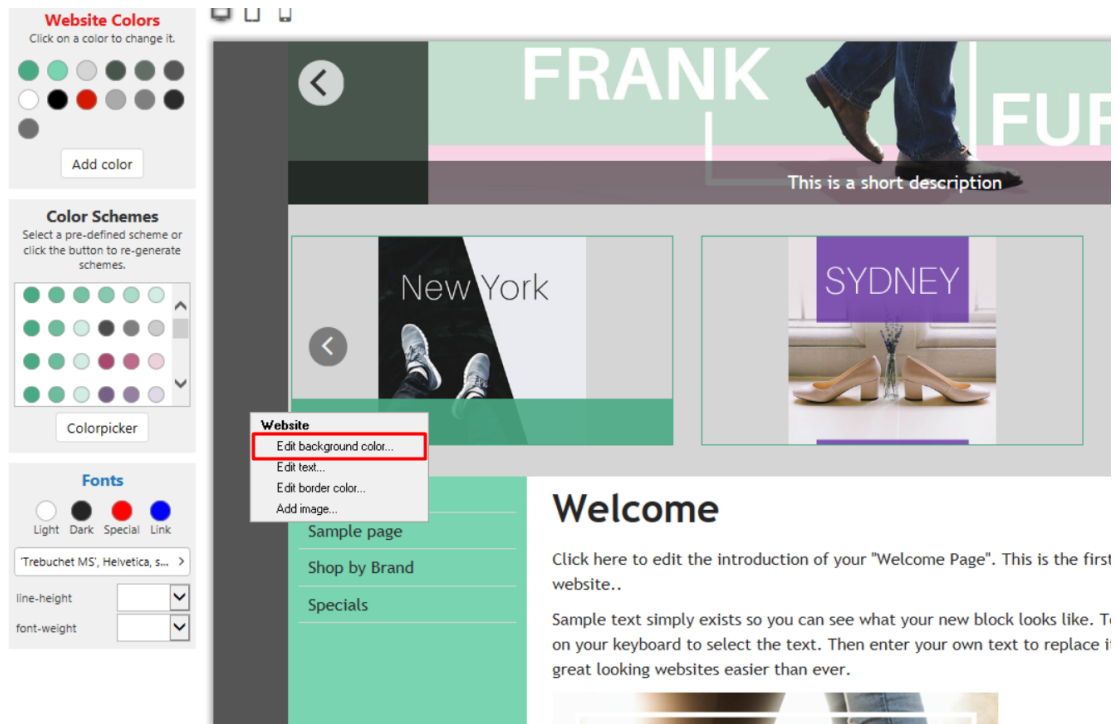


- Click OK

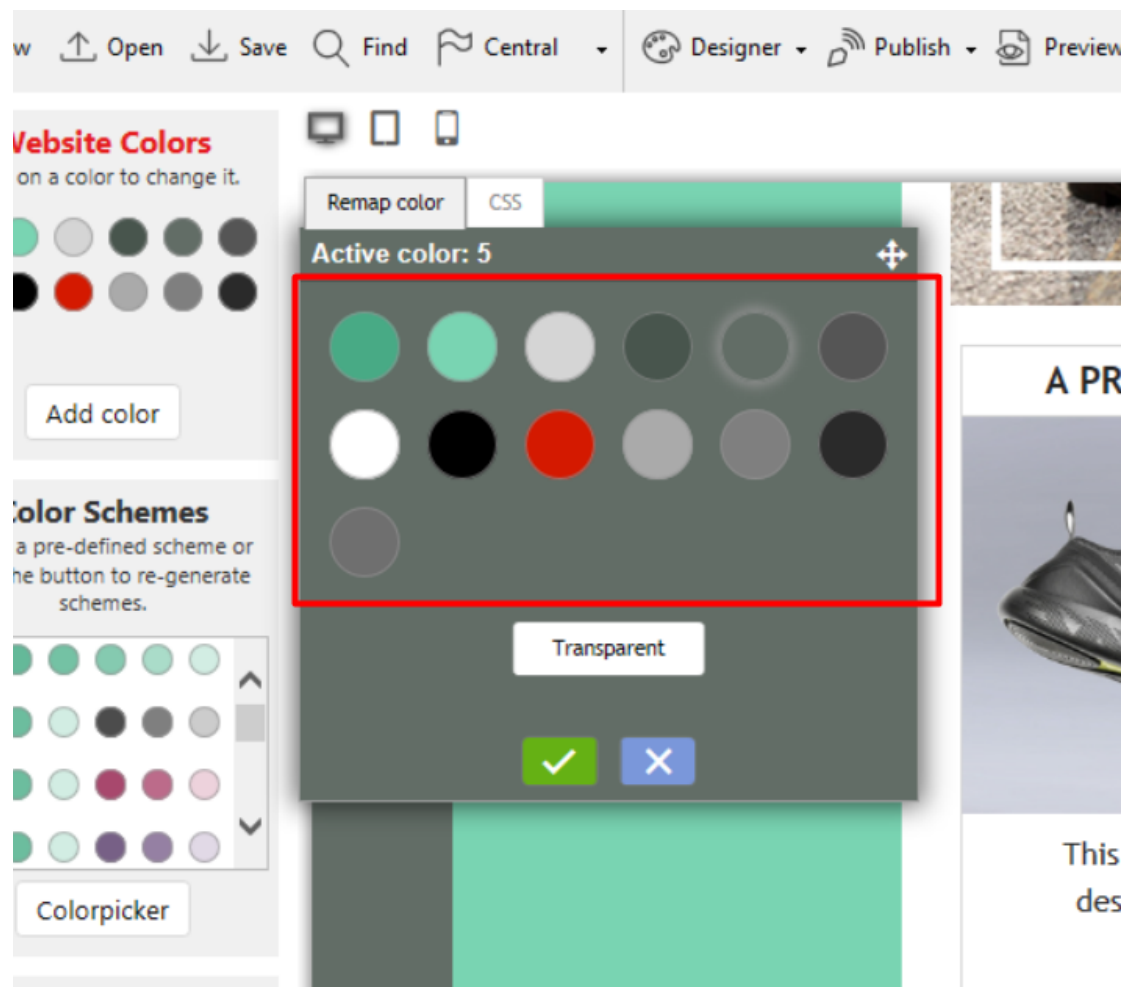
## **2. Change background color**

- Click Designer -> Customize Design

- Website -> Edit background color



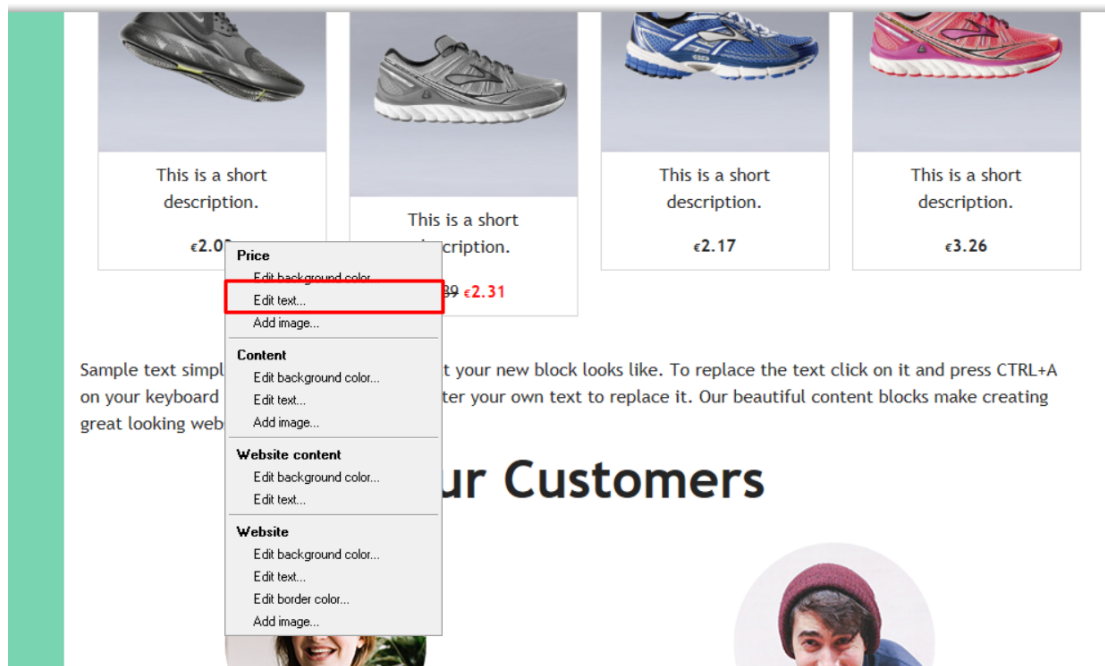
- Choose your preferred color from the color palette



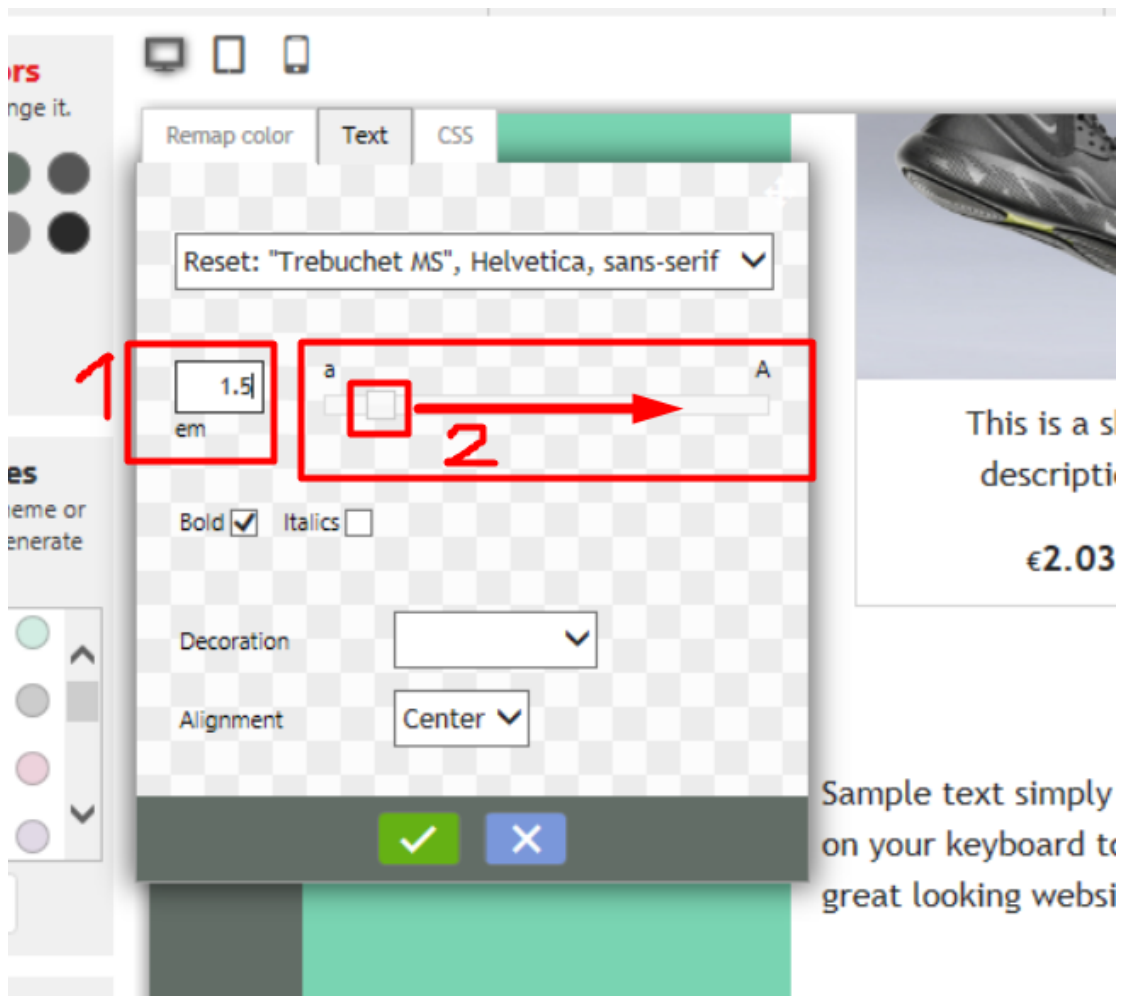
- Click Green checkmark icon

### **3. Price text adjustment**

- Click Designer -> Customize Design
- Hover your mouse to the product price -> Edit text



- You can enter the value on the box or drag it until it matches to your preferred value



- Click Green checkmark icon