



EN-How do I enable Affiliate Reseller Tracking in ShopFactory?

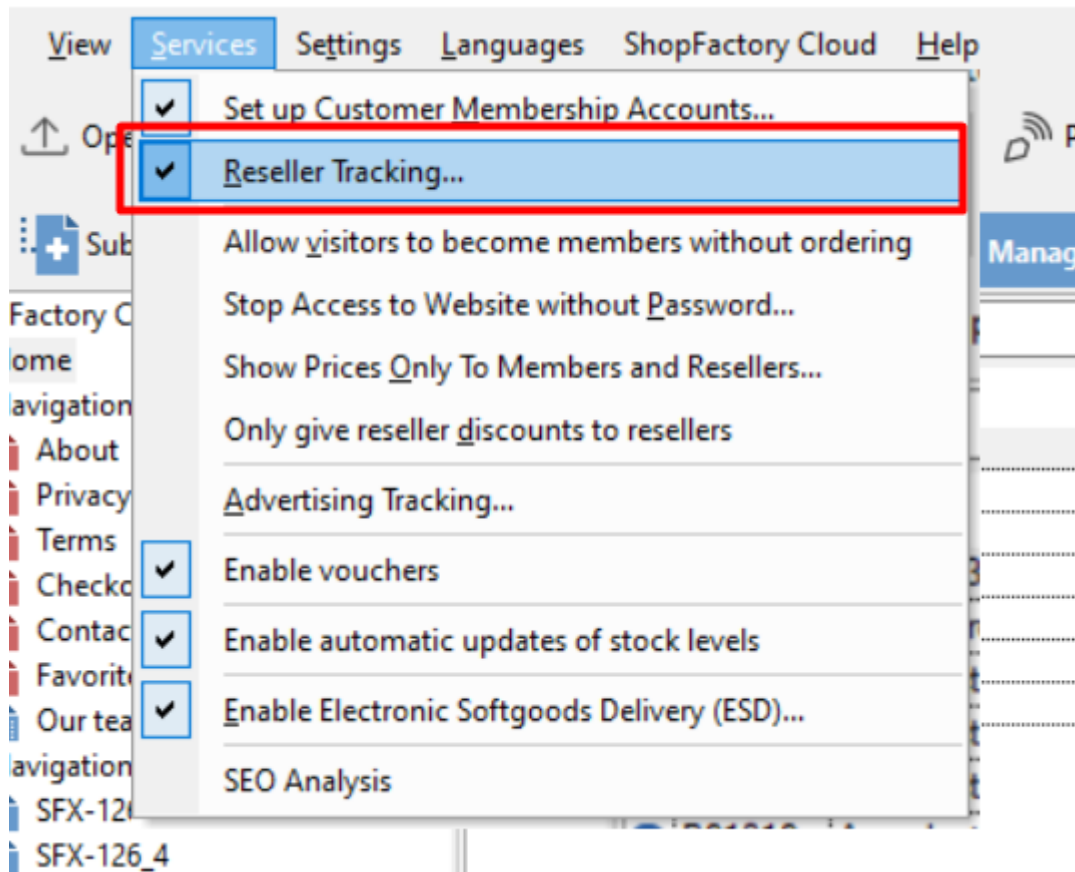
Elenor A. - 2021-12-08 - Apps & ShopFactory Cloud

Create a personal store address for your customers who sign up to your affiliated reseller program. Reward them with a discount (Level 1 commission) on their future purchases via their personal store address. Encourage them to generate an extra income stream, by sharing their own personal store address around. With friends, colleagues and even total strangers. By any means possible.

Affiliate Tracking service is included in ShopFactory Gold and Platinum plans with SF Cloud service.

Affiliate commissions service uses the same option as 'Reseller Tracking' in ShopFactory under **Services** menu. To enable Affiliate commissions tracking service, please refer to the steps provided below:

- Open your shop in ShopFactory.
- Click **Services** menu-> **Reseller Tracking** (a tick mark will appear on the left side if this option has been enabled)



To be able to integrate Affiliate Tracking service in your shop, ensure you have already enabled "Reseller Tracking" option in your shop – see above.

Setup Affiliate Tracking in ShopFactory Cloud backend (Total Care)

- Open shop in ShopFactory
 - In ShopFactory Central page, click **My Orders** button
 - You will be directed to the SF Cloud interface.
 - Enter your Shop URL / website address by clicking on Account > Account > ShopFactory Store address
- <https://app.santu.com/buynow/profile/shopfactory>
- Click Save
 - Click Marketing -> Affiliates & MLM
 - Click Settings
 - At the Affiliate Reseller Settings window, enter the required information

Affiliate Reseller settings

How to pay reseller

Base currency code for calculating and paying commissions: USD

Payment period: 1 Month/s
Period between commission payments.

How to pay reseller:
 PayPal
 Send a cheque
It is easiest to pay resellers via [PayPal](#) — all they need is a free PayPal Account.
(Note: [PayPal](#) only supports currencies: USD, EUR, AUD, CAD, GBP, JPY.)

Minimum payment: USD 30
Define the minimum payment amount before you will send out a payment to a reseller.

How to calculate payments

Settlement period: 1 Month/s
Time which must pass after a sale before commissions are paid.

Security period: 6 Month/s
How long a percentage of the commission is held in trust to cover charge backs and product returns. (Security Deposit)

Security deposit withheld: 10 %
The percentage of commission held in trust to cover charge backs and product returns.

Minimum sales for down-line: USD 100
Reseller must sell at least this amount during a payment period to receive his percentage of the down-line commission.

Settings: Commission

Commission: %

Down-line Level: Discounts in percent to be given to Affiliates on different levels for multi-level reselling. Select the levels you want to activate.

Level	Commission
2 <input type="checkbox"/>	%
3 <input type="checkbox"/>	%
4 <input type="checkbox"/>	%
5 <input type="checkbox"/>	%

Banner advertisement image URL

Show link code: Yes
 No

URL:

Next

- **How to Pay Reseller** - choose the Payment Period (Period between commission

payments), How to Pay Reseller (PayPal, send a cheque, bank transfer), and Minimum Payment (Define the minimum payment amount before you will send out a payment to a reseller).

- **How to Calculate Payments** - Settlement Period (Time which must pass after a sale before commissions are paid), Security Period (How long a percentage of the commission is held in trust to cover charge backs and product returns -Security Deposit), Security Deposit withheld (The percentage of commission held in trust to cover charge backs and product returns), Minimum Sales for Downline (Reseller must sell at least this amount during a payment period to receive his percentage of the downline commission)
- **Settings:** Commission and Downline Level
- **Banner Ad Image URL** – you will need to upload an image for your Banner Ad to your web server using a third party FTP (i.e. FileZilla or CuteFTP) and the complete URL should be specified in this section. For example,

<http://www.shopfactory.com/contents/media/sf-logo-60.png>

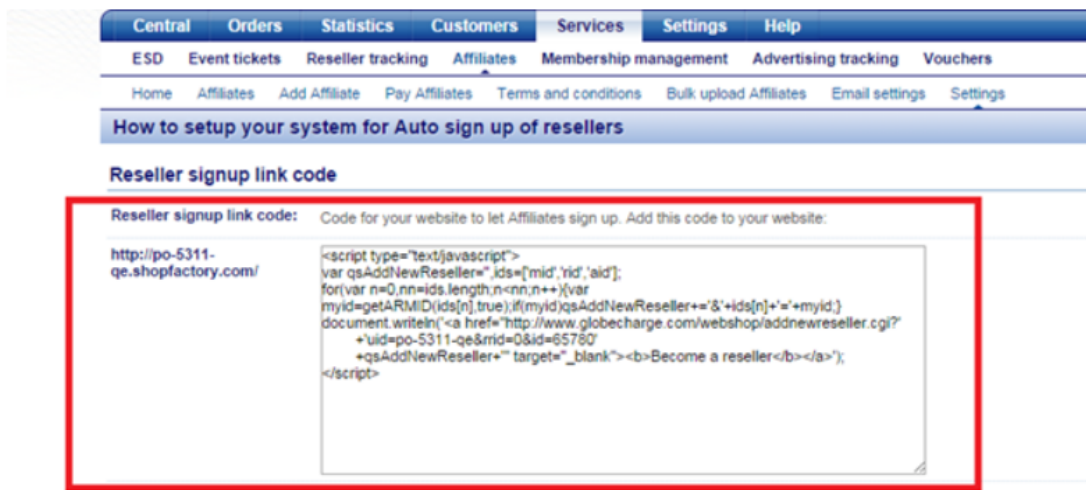
ShopFactory™

- Click Next

Your Affiliate Resellers will need to insert the code displayed in their website.

Setup your website to allow customers to become affiliates

If you want your customers to sign up as an affiliate, add this html code to your website.



The screenshot shows the ShopFactory website interface. The top navigation bar includes 'Central', 'Orders', 'Statistics', 'Customers', 'Services', 'Settings', and 'Help'. Below this, there are sub-menus for 'ESD', 'Event tickets', 'Reseller tracking', 'Affiliates', 'Membership management', 'Advertising tracking', and 'Vouchers'. A secondary navigation bar includes 'Home', 'Affiliates', 'Add Affiliate', 'Pay Affiliates', 'Terms and conditions', 'Bulk upload Affiliates', 'Email settings', and 'Settings'. The main content area is titled 'How to setup your system for Auto sign up of resellers' and contains a section for 'Reseller signup link code'. This section includes a URL 'http://po-5311-qe.shopfactory.com/' and a block of JavaScript code for embedding a reseller signup link.

```
Reseller signup link code: Code for your website to let Affiliates sign up. Add this code to your website:

http://po-5311-qe.shopfactory.com/

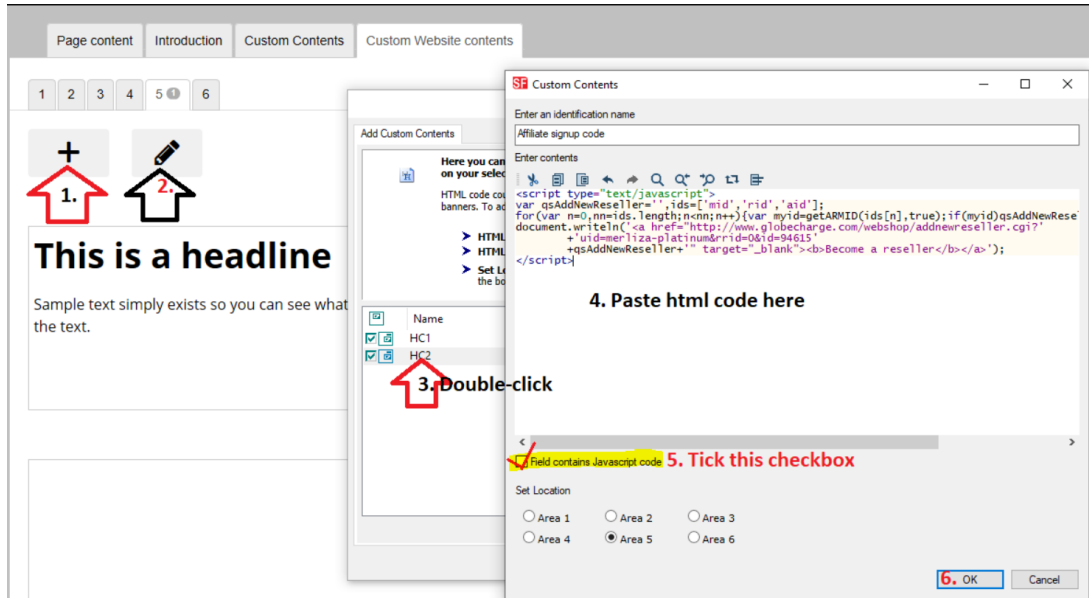
<script type="text/javascript">
var qsAddNewReseller=""&ids=[mid','rid','aid'];
for(var n=0,nn=ids.length;n<nn;n++){var
myid=getARMID(ids[n],true);if(myid)qsAddNewReseller+="&"+ids[n]+'='+myid;}
document.writeln("<a href='http://www.globecharge.com/webshop/addnewreseller.cgi?
+uid=po-5311-qe&rrid=0&id=65780'
+qsAddNewReseller+" target='_blank'"><b>Become a reseller</b></a>");
</script>
```

Adding the "Affiliate Signup code" in your ShopFactory website:

- Open your shop in ShopFactory
- Click **Central** dropdown button -> *Custom Website Contents*
- Click on the + button to add a new custom html then click the Edit (pencil icon) to open the

custom html dialog

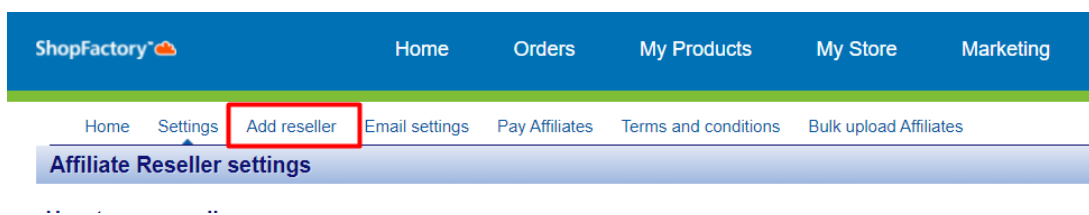
- Select the custom html then edit (or double-click to open it)
- Paste the **"Affiliate reseller signup link code"** in the content area
- Select location and click **OK > Finish**



- Save and preview your site. This will add the **"Become a reseller"** link into your site that your customers can click to Signup as affiliate.

ADD YOUR SHOP AFFILIATES

- In ShopFactory Cloud interface, click on **Settings** then choose **Affiliates -> Add Affiliate**
- Click Marketing -> Affiliates & MLM
- Click Settings -> Add reseller



- At the Add Reseller page, enter the necessary details:

- Account Set-up
- Company Details
- Commission Settings
- Shop

- Click Next

- The Affiliated Reseller Program section will be displayed. As part of the Affiliated Reseller Program, you must place one of the following approved banner ads on your website for each shop. Open your

HTML file in a text editor or your favourite web editor. Find the part of the HTML which relates to the place you want your banner ad to be located. You need to copy the text provided and paste it into your HTML document. Copy and Paste the html provided in the text area for the banner you have selected. For example,

Affiliated program

Information: As part of the Affiliated program, you must place one of the following approved banner ads on your website for each shop:

Open your HTML file in a text editor or your favourite web editor. Find the part of the HTML which relates to the place you want your banner ad to be located. You need to copy the text below and paste it into your HTML document.

Copy and paste the HTML below in the text area for the banner you have selected.

```
http://testscloud.shopfactory.com/  
<a href="http://testscloud.shopfactory.com/?mid=sx-3355-bn"  
target="new">http://testscloud.shopfactory.com/</a>
```

where, *sx-3355-bn* is the affiliate username, so use your own affiliate there and <http://testscloud.shopfactory.com/> - is the shop URL (or your website address)

If you want to use an image for your banner you can add the location of the image in the **Banner Ad Image URL** field during affiliate setup.

The html code will include img src tag. The banner image must be uploaded to your hosting space for it to display correctly.

**The html code above can be used by your affiliate in his/her website.*

EMAIL SETTINGS FOR AFFILIATES

To setup the Email message that will be sent out to your Affiliate Resellers when you add them

- Click **Marketing** -> **Affiliates & MLM** -> **Settings** -> **Email Settings**

To setup the Email message that will be sent out to your Affiliate Resellers when you add them

- Click **Services** -> **Affiliate Reseller** -> **Email Settings**

- Enter your valid email address (as a merchant).

- Enter your email message. If you support different languages in your website, choose each of the language and type the message in that language.

- Click Finish

****To view all your Affiliate Resellers: click Services -> Affiliates -> Home.*

Ensure that your affiliates use their affiliated link so that the orders placed on your website are tracked - affiliates will generate commission for each paid order. In the above example, the affiliated link is <http://testscloud.shopfactory.com/?mid=sx-3355-bn> so your affiliate will give out this link to generate commissions.

PAYING AFFILIATE COMMISSIONS

The regular Billing period is from **1st of the month until 1st of the succeeding month.**

For example, **(01/Oct/2020 - 01/Nov/2020)**

So if an affiliated order is placed on the 18th October, then this will be in this billing cycle:

(01/Oct/2020 - 01/Nov/2020)

The PAY AFFILIATES section will be auto-populated every 2nd of the month so you look at paying affiliate commissions every **2nd of the month**.

More importantly, the Billing ID shows the associated orders and the commission earned for each affiliate order which makes it easier to track.