



[Base de conocimiento](#) > [Envio, Taxes \(VAT\)](#) > [How do I limit the list of countries that I ship to?](#)

How do I limit the list of countries that I ship to?

Elenor A. - 2021-12-08 - [Envio, Taxes \(VAT\)](#)

You can limit the country or region where you ship your products to and visitors from other countries will not be able to order from your shop by setting your Shipping method properly. Please follow the steps I have outlined below:

1. Open your shop in ShopFactory
2. Click on Central -> Shipping Charges -> Enter my own shipping charges - (This is the only option you can choose to be able to limit shipping to a certain country).

Shipping Settings

'Enter my own shipping charges'

This is the most powerful shipping category. You can charge shipping costs depending on where you ship to as well as on product weight, price or quantity. You can also specify handling costs or maximum box weights or set shipping charges on a per product level.

Simply create and activate **ALL** the shipping methods you want to offer on this page, then click on 'Next'.

How do you charge shipping

☐ Free Shipping

☐ One price for all

☒ Enter my own shipping charges

☐ Use a provider ☐ Show shipping charge for product

Shipping method

- ☒ Economy
- ☒ Air
- ☒ Express

+ ✎ 🗑 ✕

Back Next Cancel Help

3. Click the Shipping method you want to set up. In this example, click Express to highlight it (as in the figure above) and click 'Edit' button (see figure below).

Shipping Settings

'Enter my own shipping charges'

This is the most powerful shipping category. You can charge shipping costs depending on where you ship to as well as on product weight, price or quantity. You can also specify handling costs or maximum box weights or set shipping charges on a per product level.




Simply create and activate **ALL** the shipping methods you want to offer on this page, then click on 'Next'.

How do you charge shipping

☐ Free Shipping
☐ One price for all US\$ 0.00
☒ Enter my own shipping charges
☐ Use a provider Show shipping charge for product ☐

Shipping method

☒ Economy
☒ Air
☒ Express

+   

Back Next Cancel Help

4. If you only want to ship to a local region, then Click the Rest of the World check box to remove the tick mark (as per below). It will be de-activated if you cannot see a check inside the box.

Shipping Settings

Set up Regions - Express

Before you can enter shipping charges for a method, you must set up the regions, where the method is available.

A region is simply a group of countries where you want to charge different shipping prices for the method you are working on.



A region can contain all or only a few countries. Or you can only create one region containing one country.

➤ **Shipping method:** Here you enter a name which describes the new shipping method. It will

Shipping Method Express

Select a region Express/Rest of the World

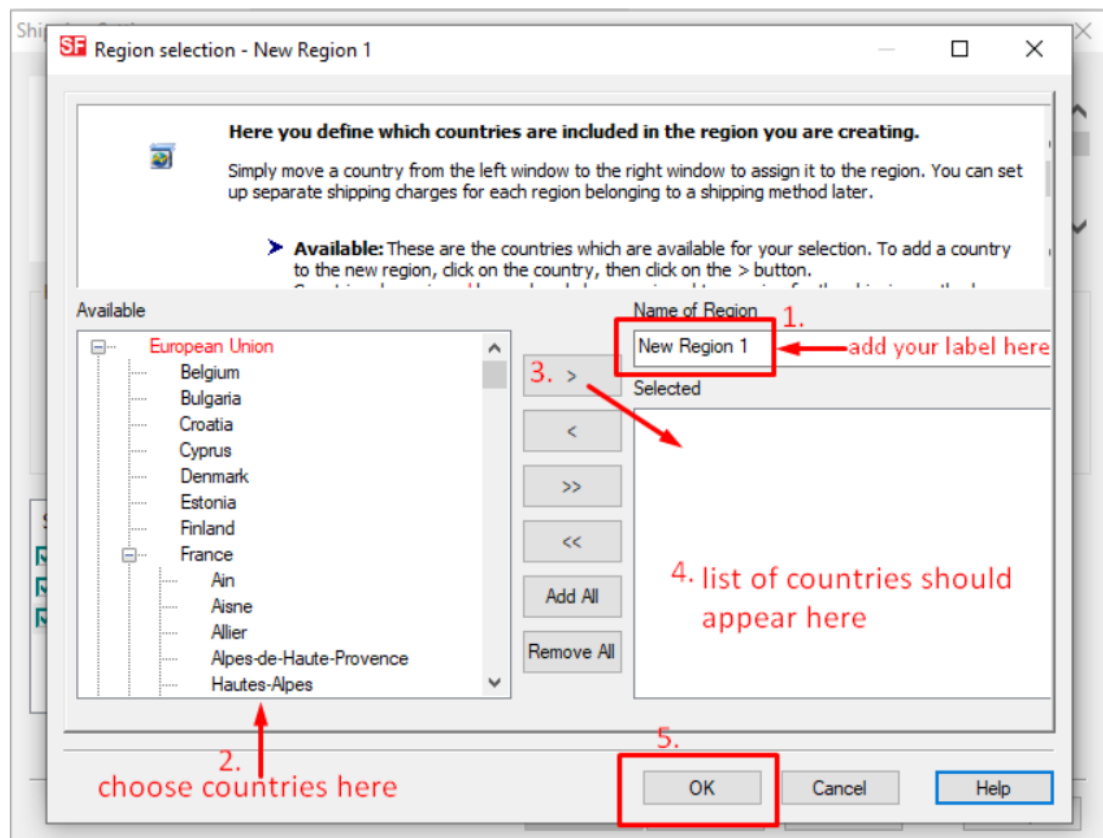
☒ Local Region
☐ Rest of the World

+  

OK Cancel

Back Next Cancel Help

5. If you want to reduce the list of countries then click on add "+" button to add a new region (or edit existing one by clicking on it and clicking the edit button)



6. Click OK button.

7. Repeat steps 3 to 5 for all the active shipping methods.

8. Click Next button.

9. Enter the appropriate details:

¹Calculate charges, ²Apply Rates to, ³Add ranges, ⁴add handling costs

Shipping Charges

Here you enter the costs you charge for the shipping methods you offer.

In the 'Select a region' Window select a region belonging to a shipping method.
 If you cannot see the regions you have set up for a shipping method, click on the **+** next to the name of the shipping method.

All charges you enter for any shipping method will now only apply to customers living in the region you have selected.

Select a region

- ☒ Economy
 - Local Region
- ☒ Air
 - Local Region
- ☒ Express
 - Local Region

Economy/Local Region

How do you charge shipping

Calculate Charges **1.** By number of products

Apply Rates to **2.** From - To Ranges

From	To	Charges: From - To Ranges

3. **+** ✎ ✕

Handling Costs **4.** US\$ 7.00

Back Finish Cancel Help

- Repeat step 7 for all shipping methods (local region) that you want to setup.
- Click Finish.
- Save and Preview your shop.
- Place a test order in your shop. At the checkout page, you will only see your country (local region) at the shipping location.