



Using "Search Filters" feature in ShopFactory

Elenor A. - 2021-12-08 - Aplicaciones y servicios SF-Cloud

ShopFactory Search Filters

Requires ShopFactory V14 or higher (ShopFactory V14 is the current release.)

The screenshot shows the ShopFactory search filters interface. On the left is a green sidebar with the following sections:

- Shop by category** (dropdown)
- Filters** (with a search phrase input and a right arrow)
- Price** (range slider from A\$4.00 to A\$4,899.00)
- Specials** (checkbox for "Only show specials")
- Brand** (checkboxes for Camelbak, Deuter, Giant, Lazer, ShopFactory)
- Specifications** (checkboxes for Handlebar, Saddle, Seatpost, Stem)

The main content area is titled "Now with Filters" and displays three product cards:

- Product 1:** A bicycle. Price: A\$ 100.00. Description: "This products has options and attributes, a video and a slide show in a light-box, ..."
- Product 4:** Four helmets. Price: A\$ 499.00, crossed out, and A\$ 106.82. Description: "ShopFactory lets you create your products quickly when you enter them manually with the ..."
- Product 2:** Two backpacks. Price: A\$ 4,999.00. Description: "Optional items are separate products, combined into a product bundle, such as an extra helme ..."

Each product card has a "More details" button.

Now you can add *Search Filters* to your online store, so your customers can find your products more quickly, and to give them more options to locate the products they want.

Visitors can filter your products by price, Special offers, Brands, Specifications, and Options and choices.

Add hidden keywords to your products, so products that do not include these terms in their descriptions can also be found.

Making your products more accessible will help you sell more.

Your Hosting account must have PHP enabled.

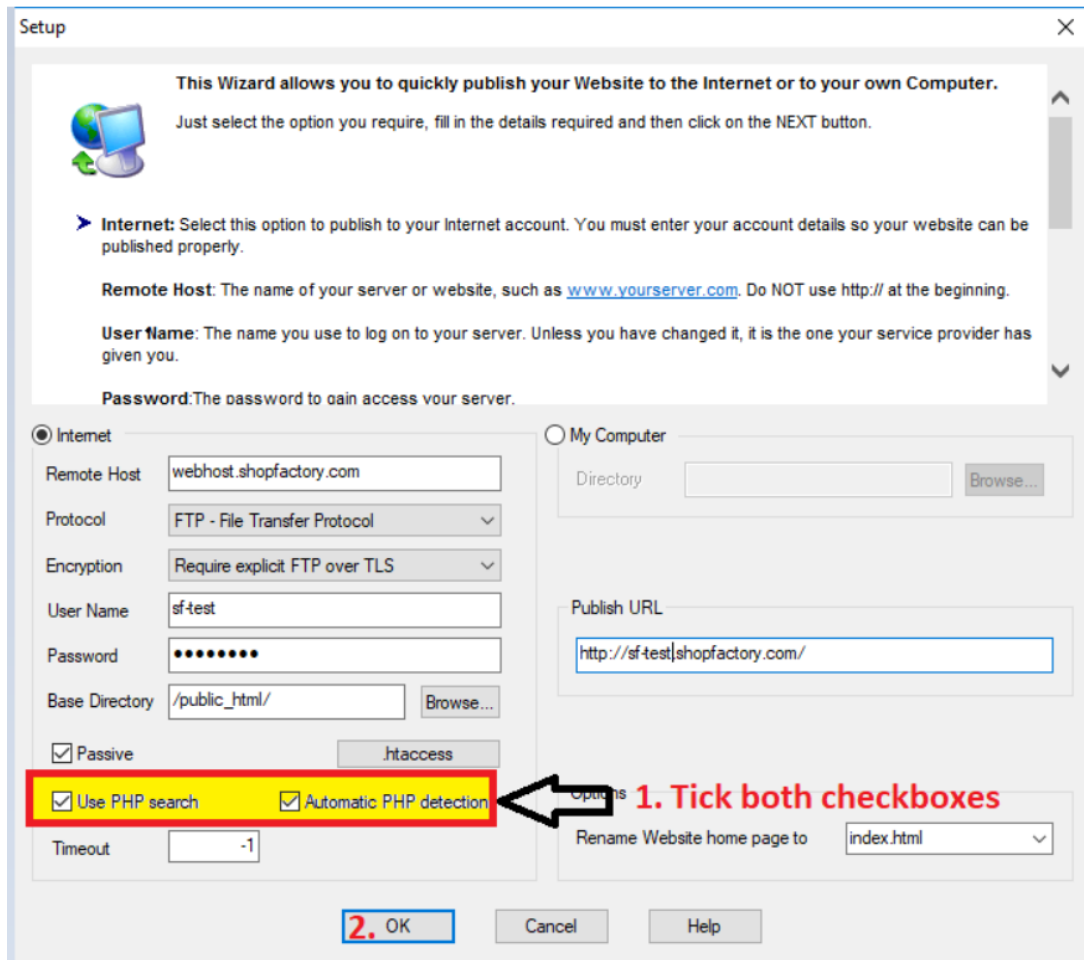
REQUIRED: **PHP 5.3 or higher**

NOTE: PHP scripts need to be given permission to create and write to directories and create and write to files.

If you can only set the permissions on specific directories - then check with your Host if you have the correct permissions for these directories:

- must be able to create and write to files in `<base directory>/contents/<lang>/`

- must be able to create directories in <base directory>/contents/phpsearch/
- must be able to create and write to files in /<base directory>/contents/phpsearch/htmlfiles/
- must be able to create and write to files in <base directory>/contents/prpgmap/



Enabling "Search Filters" app in ShopFactory

1. Purchase the app

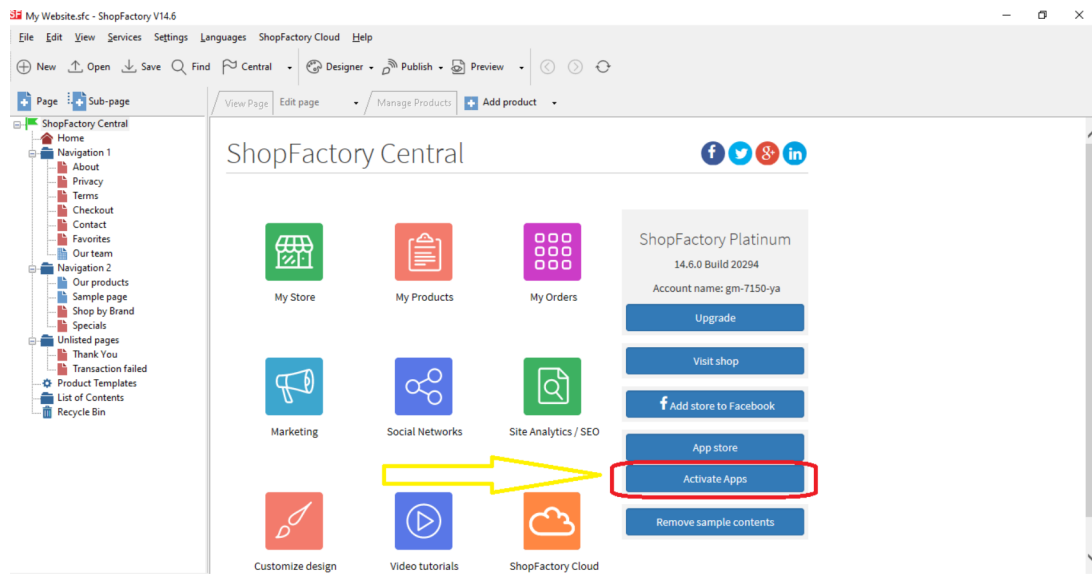
App services are only available in the latest ShopFactory version.

- Open your shop in ShopFactory 14
- At the left-tree menu, click on **ShopFactory Central** page
- At the right-most column, click on "**App Store**" button to connect to the SF Cloud backend interface
- Select "**ShopFactory Search Filters**"
- Click on the "**Add App**" button
- This app will be activated in your ShopFactory account

(Note: If your current ShopFactory Total Care plan uses "Pay on Invoice" payment option, you will receive a separate invoice for this. We will then activate the app in your account as soon as

payment is received.)

- Go back to the ShopFactory interface -> select *ShopFactory Central* page -> click on "**Activate Apps**" button



2. To enable Search Filters app in your shop

- Go to ShopFactory Central -> *My Store*

- Click '*Search / Page Filters*' option at the left menu

- Tick the checkboxes for the departments (pages) that you want Filters to be enabled

- Select the Display Styles

<Two LD tags can be changed here. "*Close Shop by Category by default*" is only applicable for themes with a left sidebar.>

- Click "*Finish*" button

- Save and preview your shop in external browser

- Go back to Normal mode, Publish -> Publish your website on the Net -> tick "Publish all" for this session -> Publish

- Navigate to a department with Filters enabled to see the "Search Filters" function in action

When a filter type i.e. *Options and Choices* is enabled, all the departments that have filters enabled will show the active filter type (such as *Options and choices*). In other words, the filter type enabled setting is universal for all filtered departments.

When a filter type is enabled, a filtered department will have the filter choices specific to the products in the department. In other words, the Options and Choices displayed in *Department1* will be that of the products in *Department1*. The Options and Choices displayed in *Department2* will be that of the products in *Department2*.

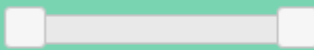
Filters



Price

A\$4.00

A\$4,899.00



Specials

Only show specials

Brand



Specifications



Options and Choices



Colour ^

Black

Black Matt

Grey Orange

[Show all](#)