



[Knowledge base](#) > [Design and Customizations](#) > [Selecting a different Navigation Style, Page Style, Productloop style, Detailed View Style](#)

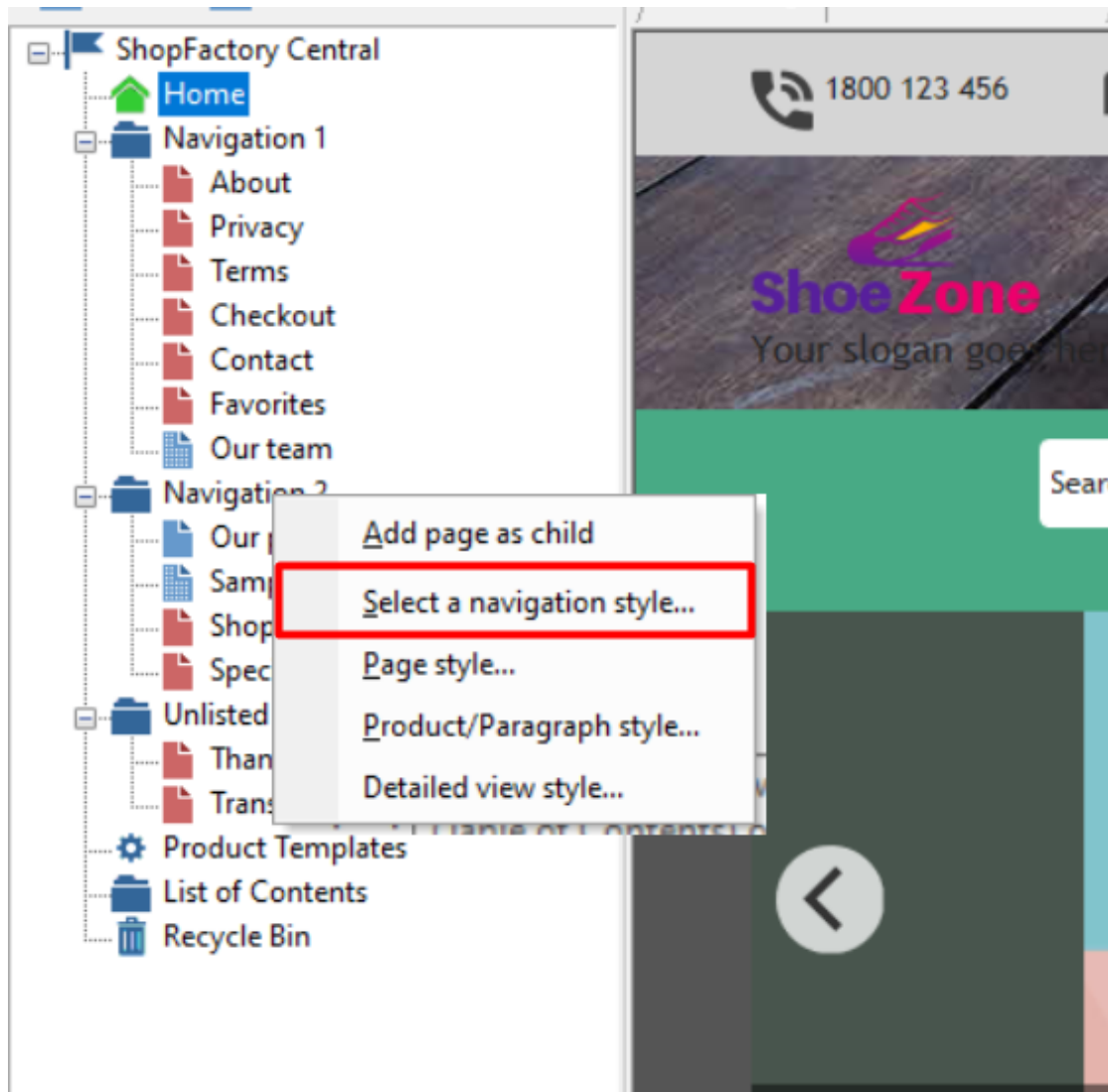
## Selecting a different Navigation Style, Page Style, Productloop style, Detailed View Style

Elenor A. - 2021-12-08 - [Design and Customizations](#)

The website theme you choose for your shop has its own preset design styles. You can change a specific page or product to have a different style from the default one that comes with the website theme.

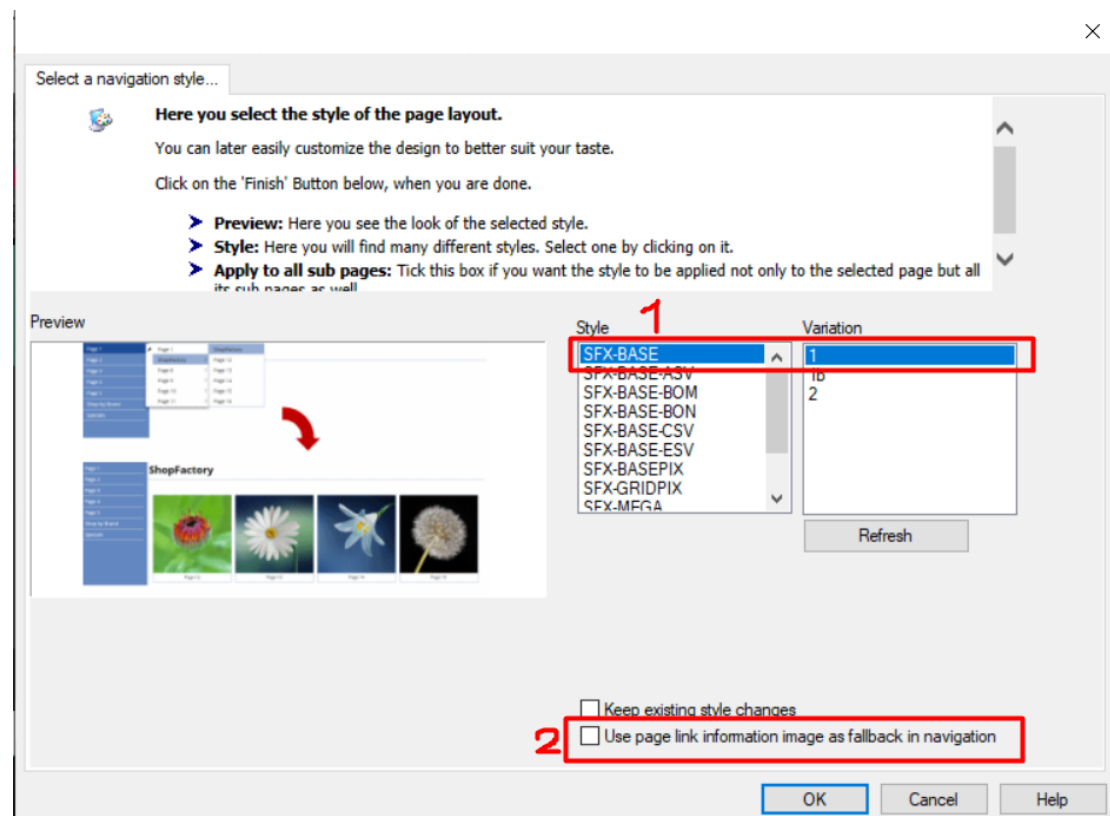
### A. Changing to a different Navigation Style

- Open shop in ShopFactory
- At the left tree menu, right click on Navigation 2 -> Select a navigation style...



- You can select your preferred Navigation Style such as SFX-BASE variation 1

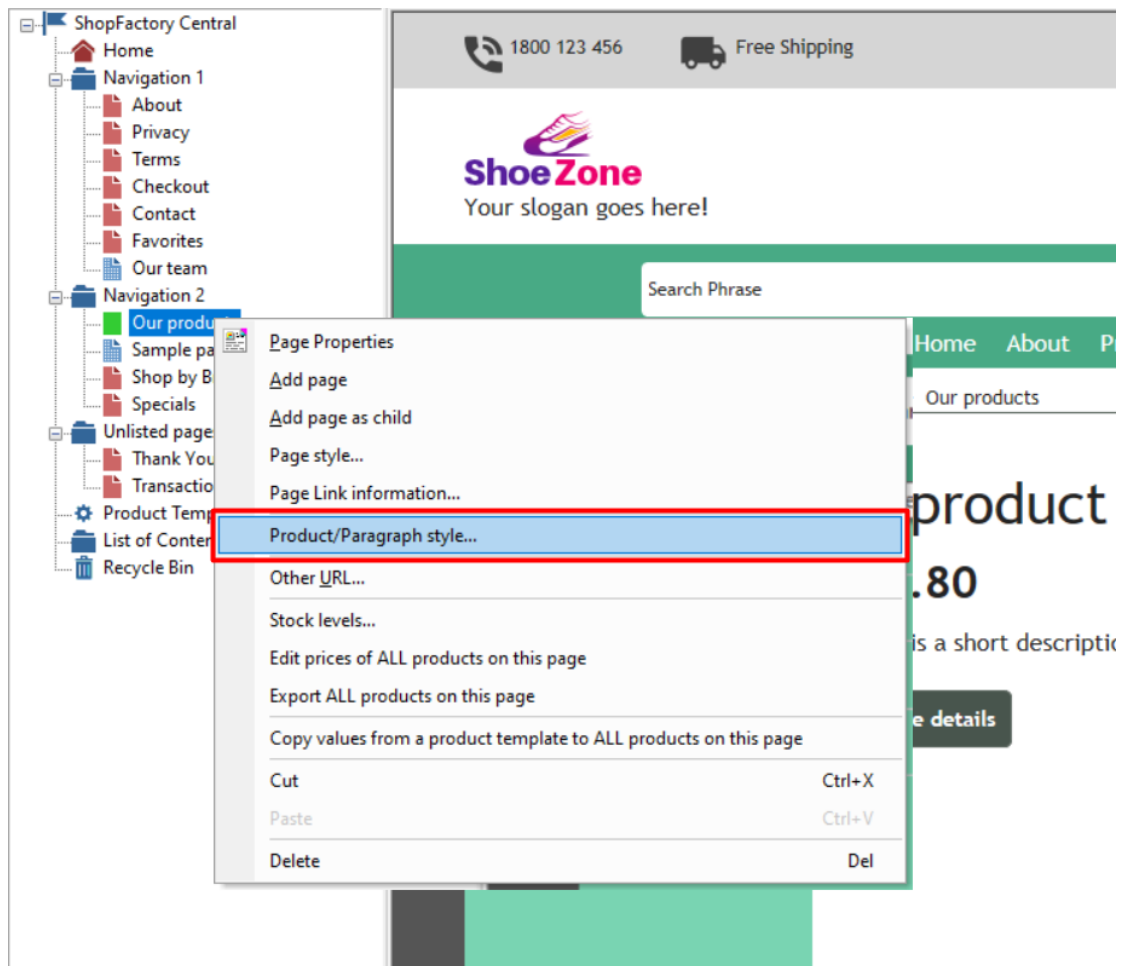
NOTE: untick "Use page link information image as fallback in navigation - if you want to use "Navigation image" in the shop instead of the <Page Link Info image>



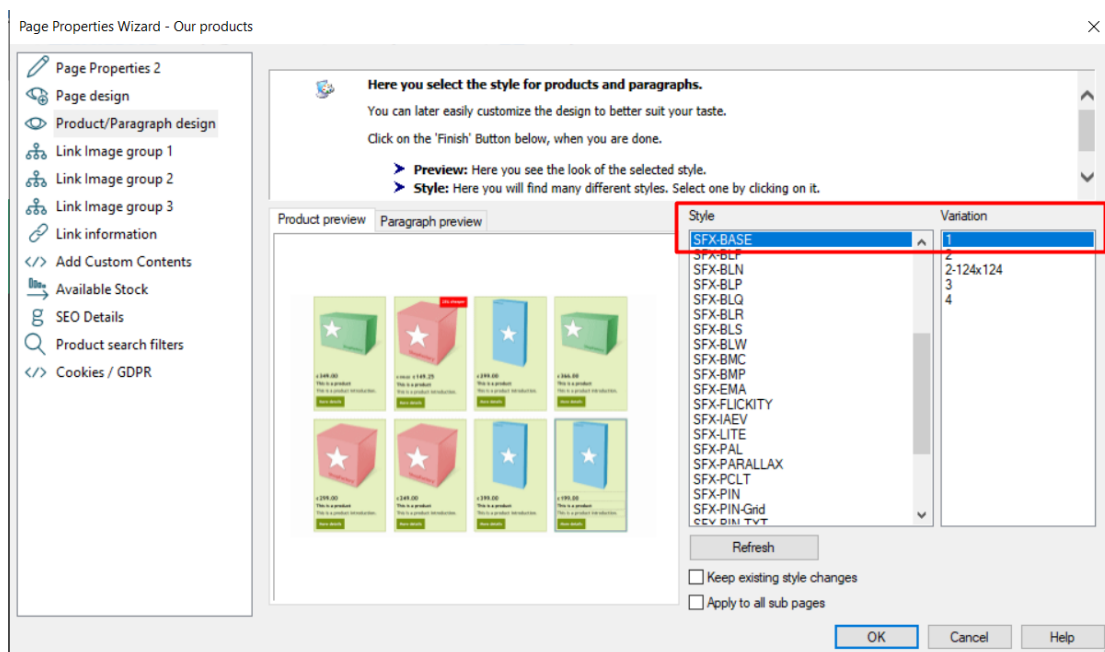
- Click OK

## B. Changing to a different Productloop Style for a specific page

- At the left tree menu, right click on the specific page, select "Product/Paragraph style..."



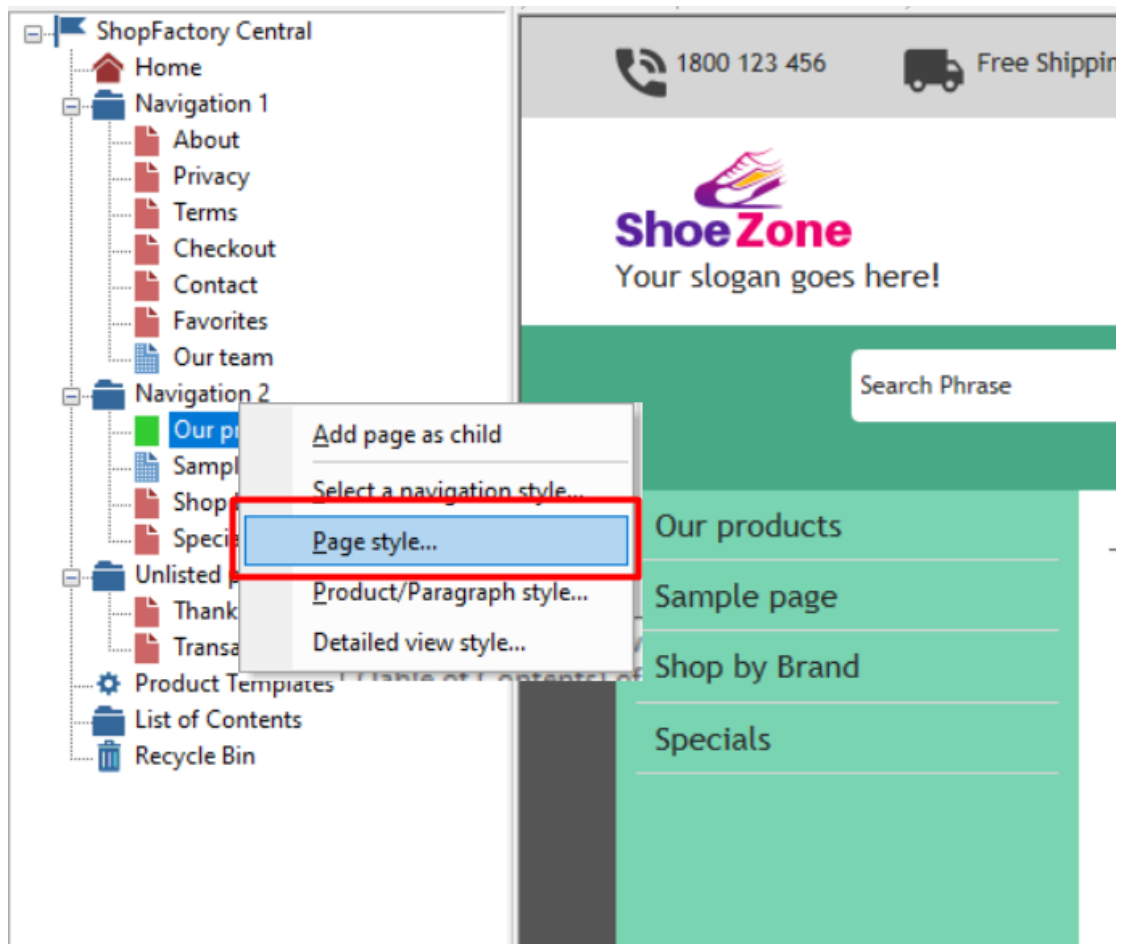
- You can select your preferred Product Style such as SFX-BASE variation 1



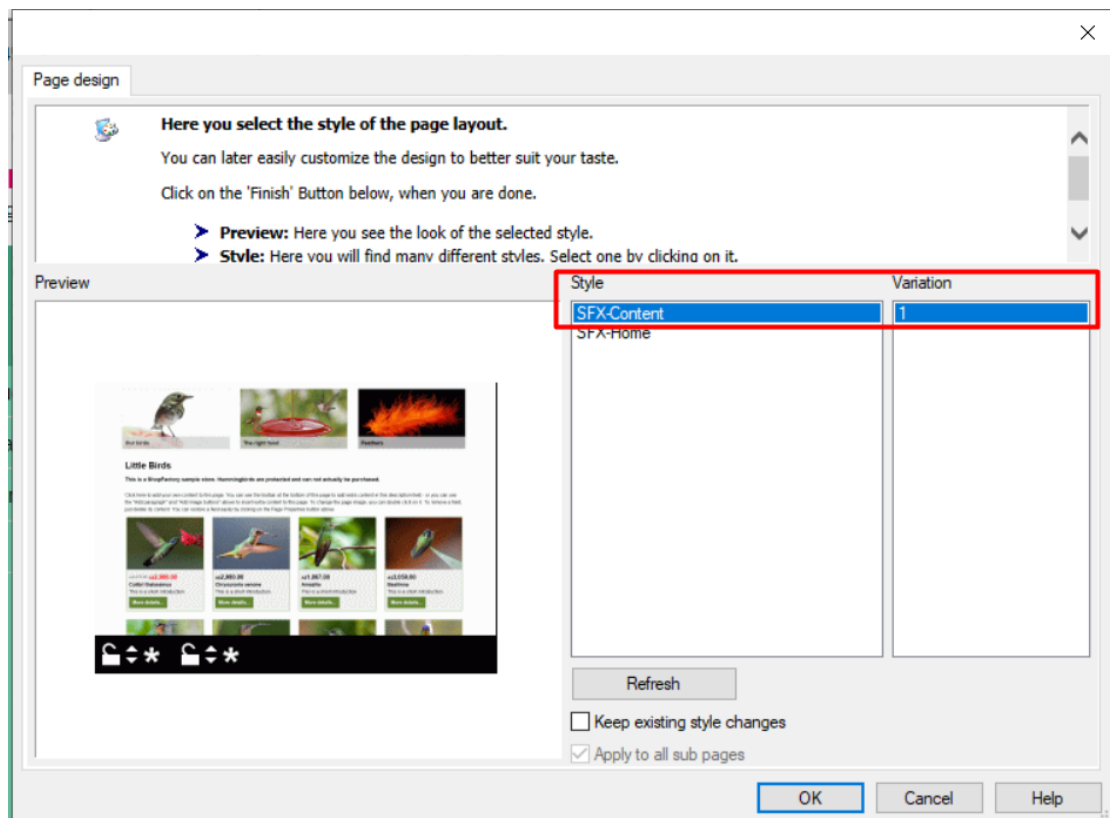
- Click OK

### C. Changing to a different Page Style

- At the left tree menu, right click on Navigation 2 -> Page style...



- You can select your preferred Page Style such as SFX-Content variation 1

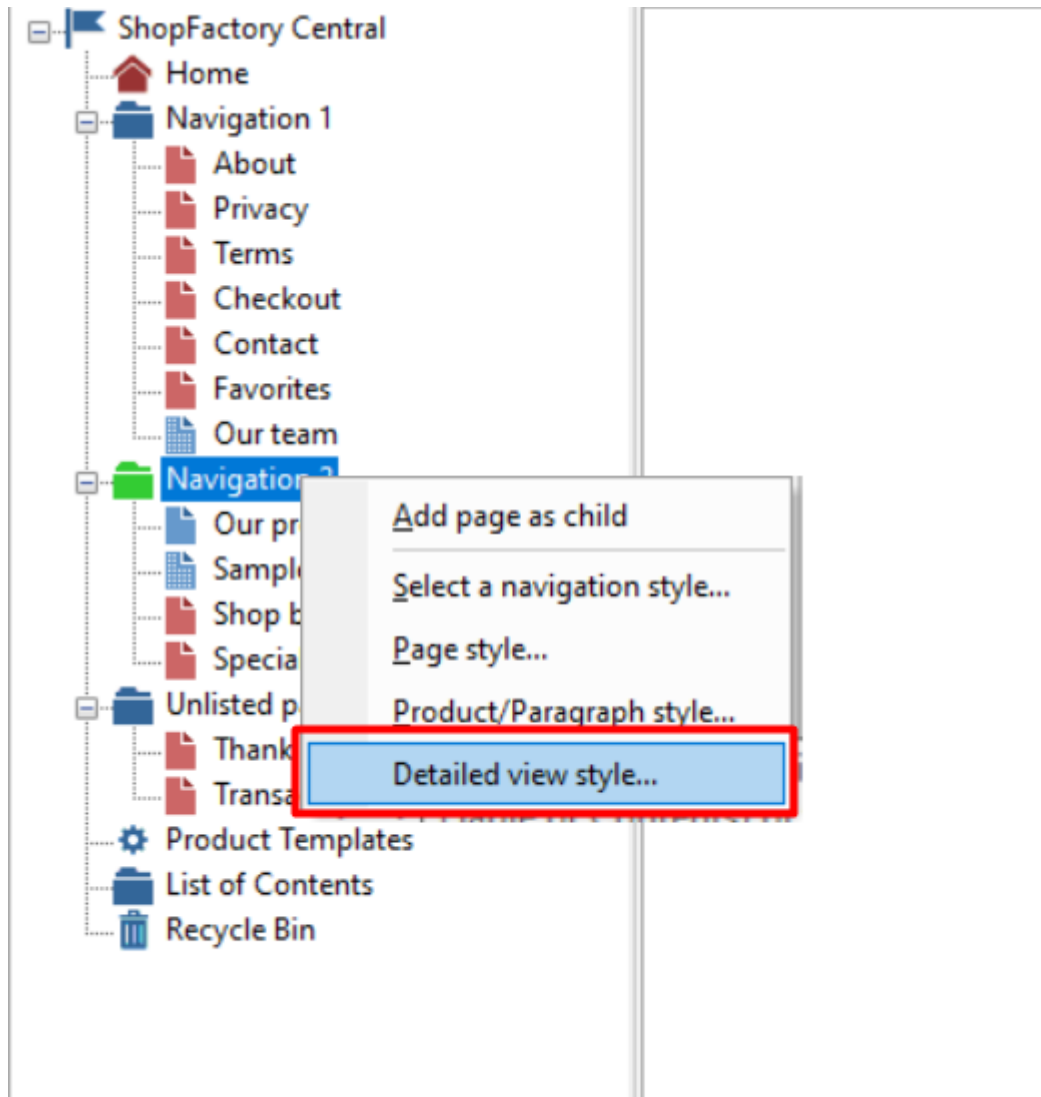


- Click OK

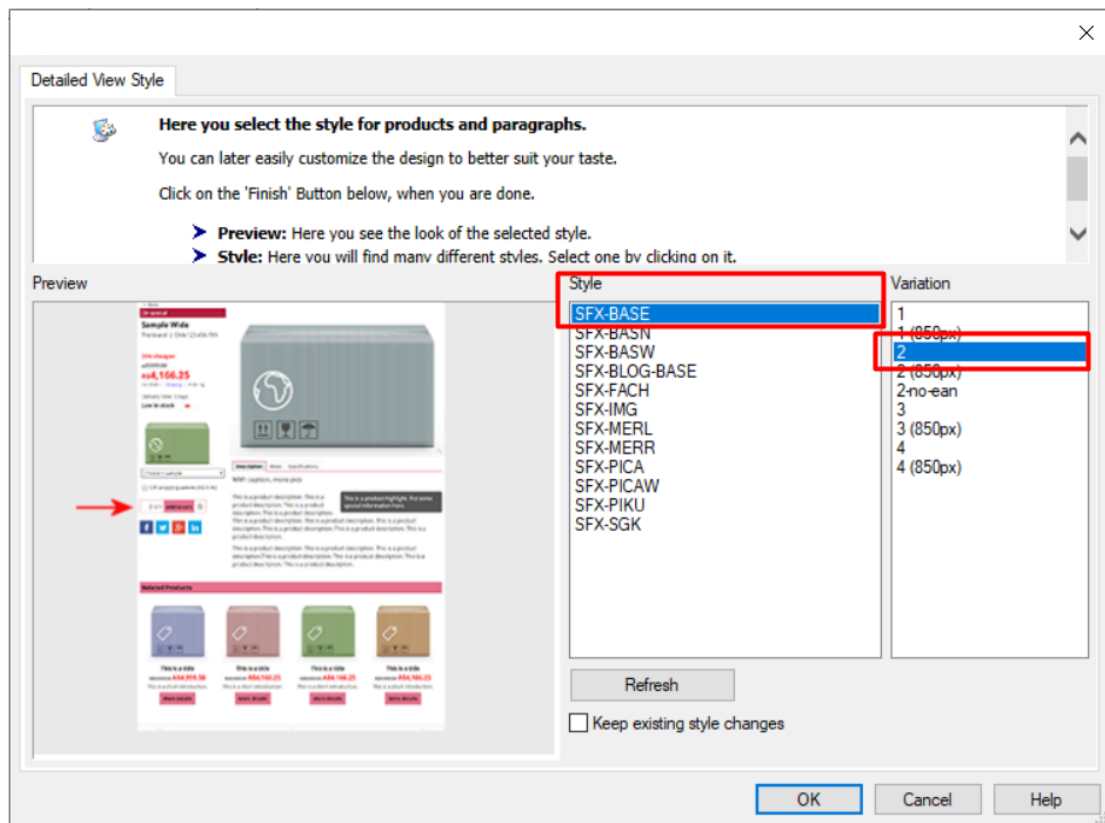
## D. Changing to a different Detailed View Style

*Detailed View Style for all products in a page*

- At the left tree menu, right click on Navigation 2 -> Detailed view style...



- You can select your preferred Detailed view Style such as SFX-BASE variation 2

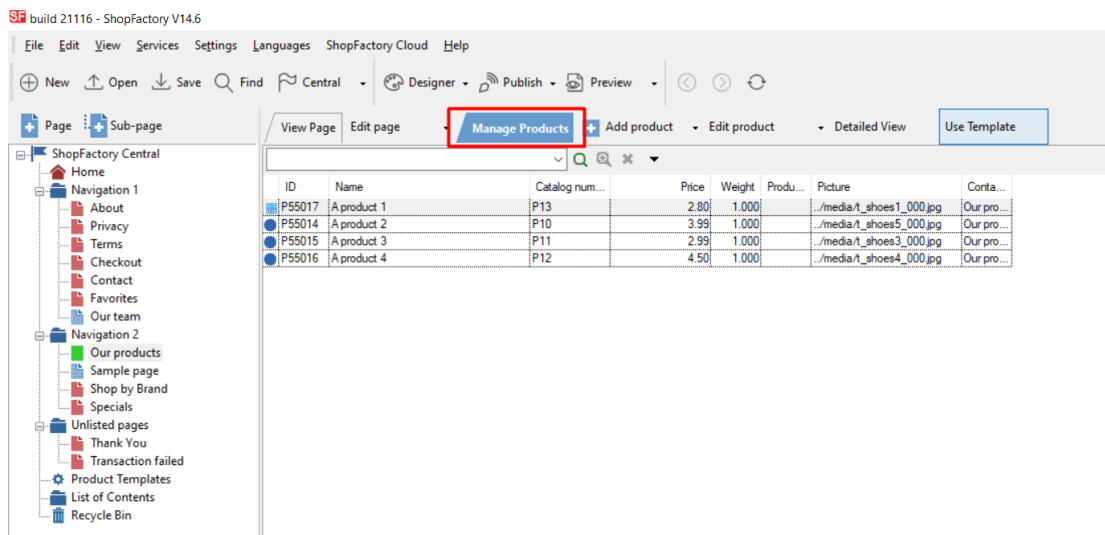


- Click OK

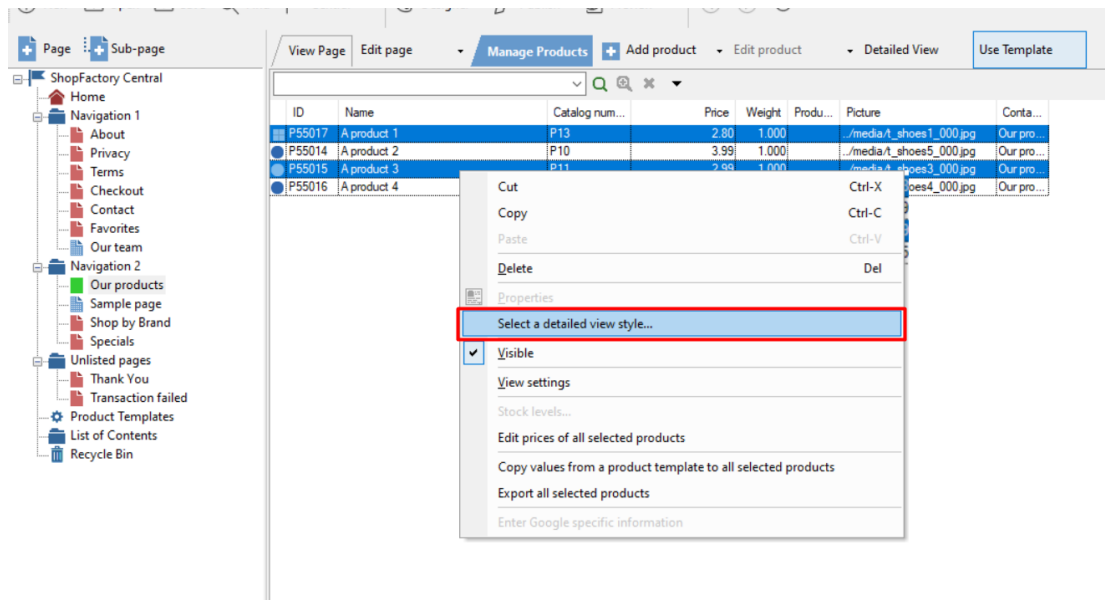
### Detailed View Style applied to selected products

- At the left tree menu, click on the specific page

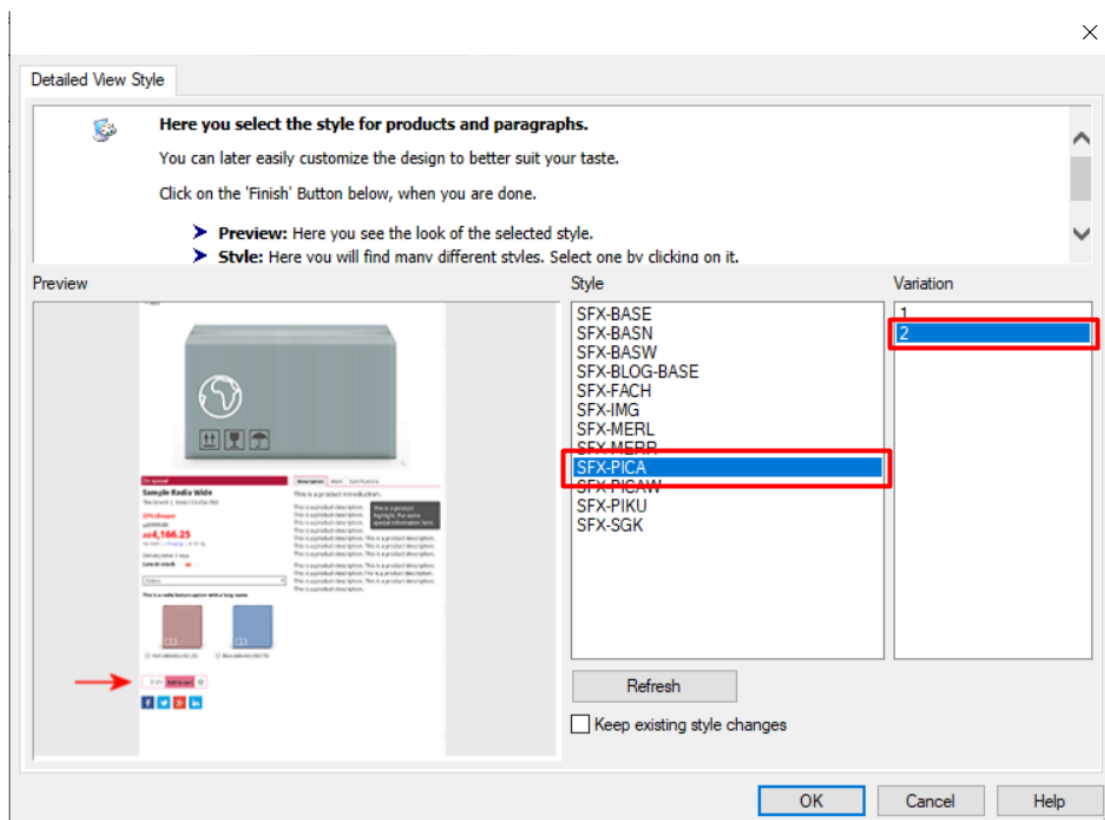
- Click "Manage Products" (List View mode)



- Select a few products -> right click -> Select a detailed view style...



- You can select your preferred Detailed view Style such as SFX-PICA variation 2



- Click OK