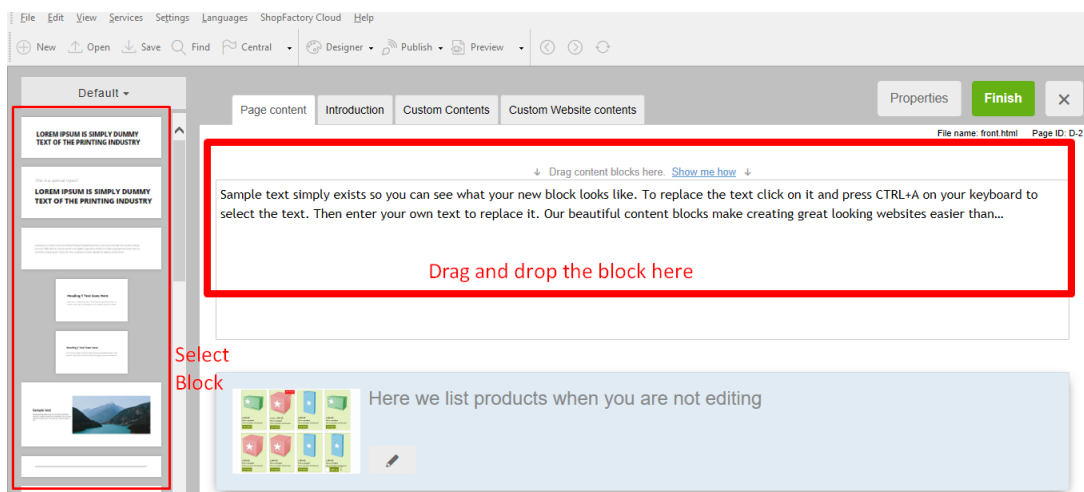


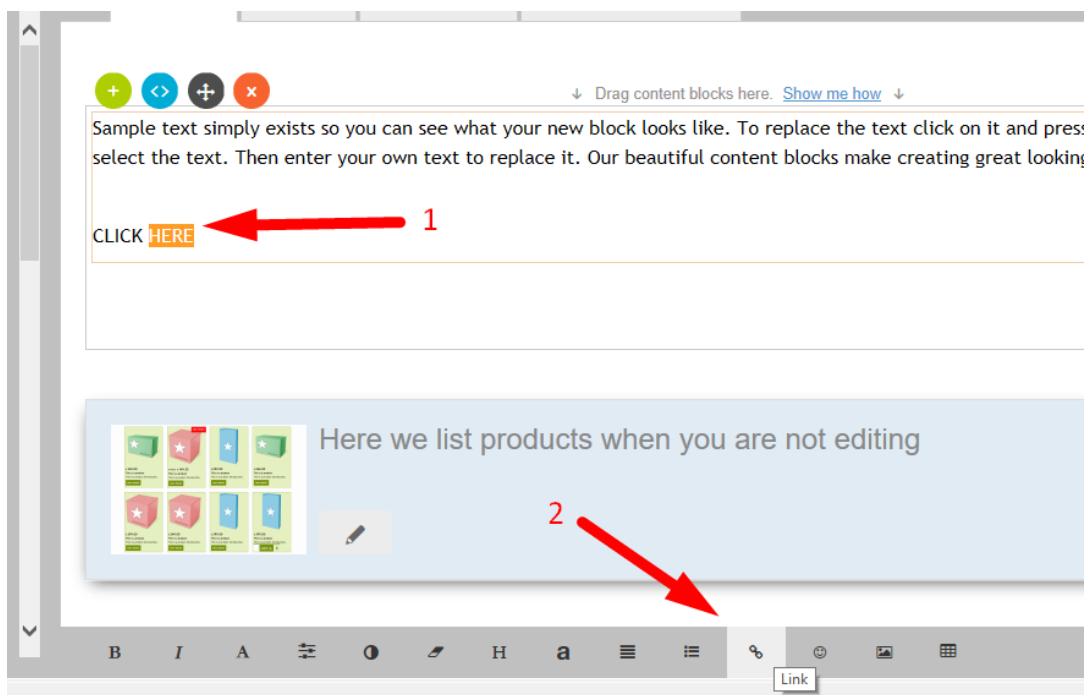
How do I add a text link in a page?

Merliza N. - 2021-12-08 - Pagina's en producten

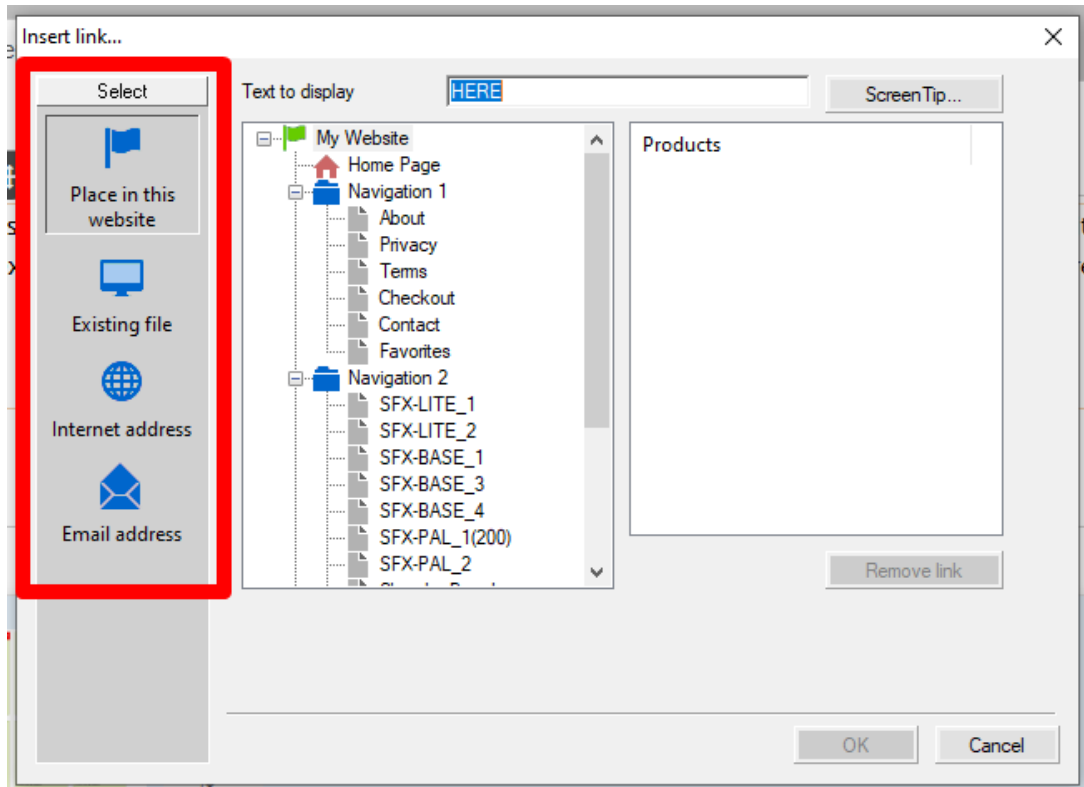
- Open shop in SF
- On the left tree, select a page where you want to add link text. ie Home page
- Click EDIT PAGE
- Select Block from left tree and drag it to the content box



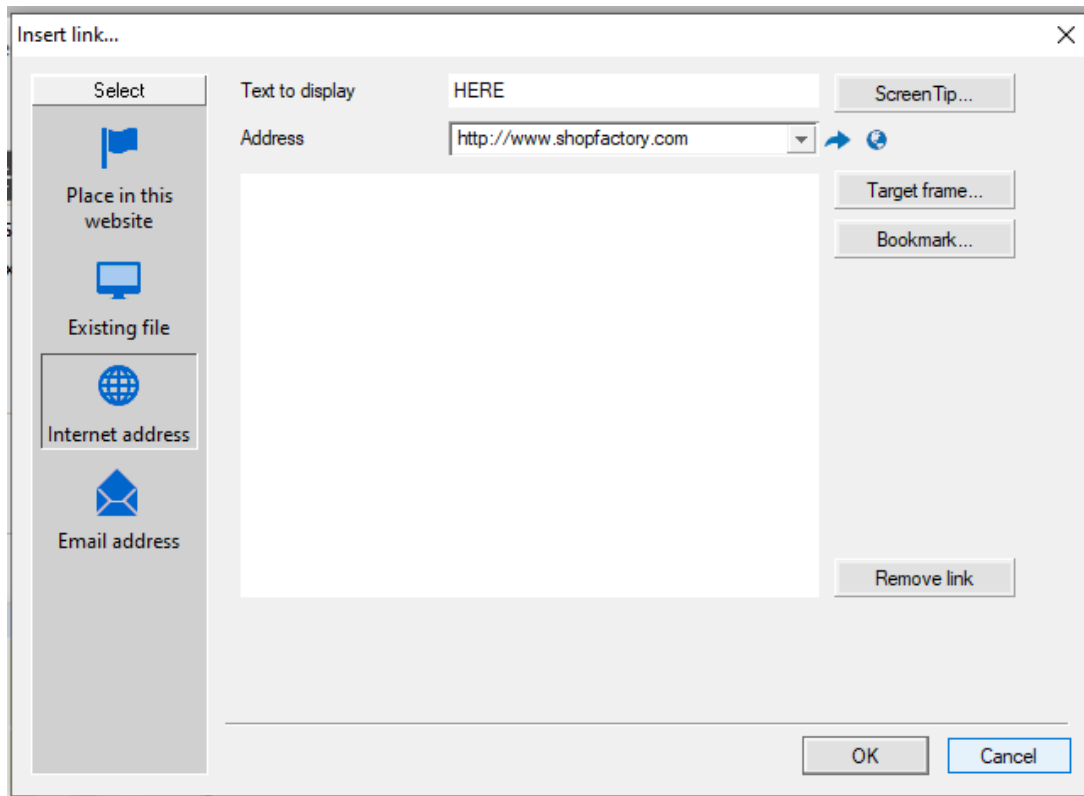
- Highlight the text/s where you want to add a link and click the icon Link in toolbar below



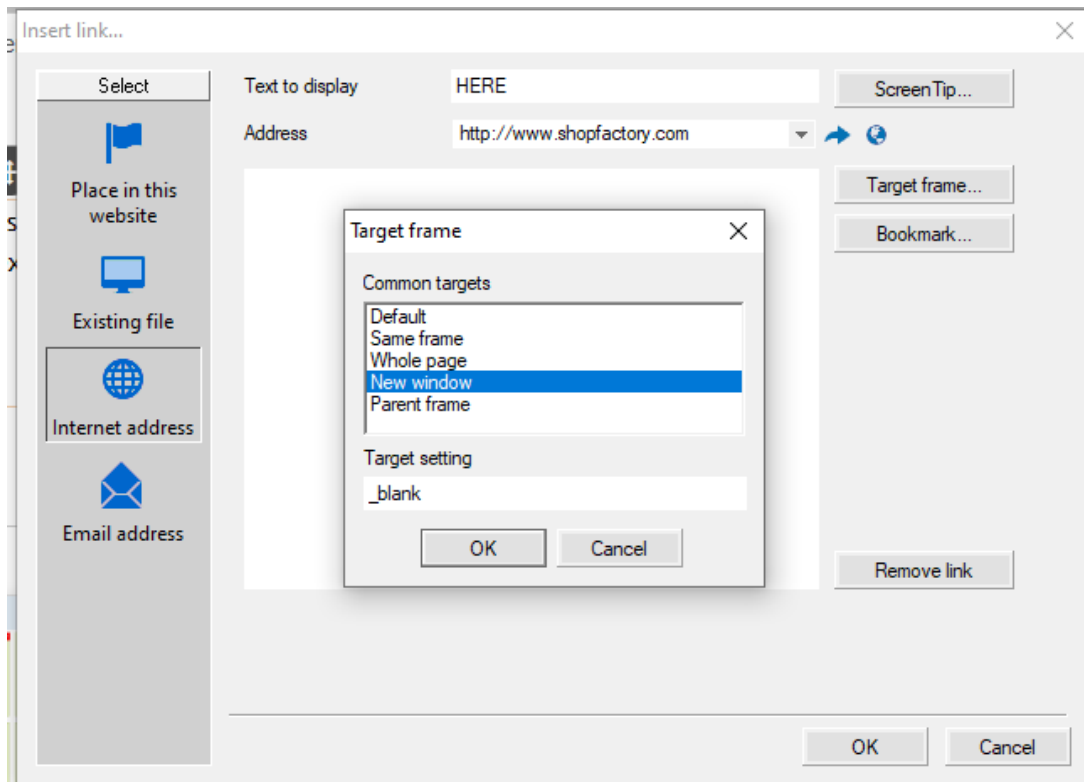
- You will be prompted to link to a page or product in your website (Place in this website) or you can choose the "Internet Address" button at the Select section to link to an existing website address.



- E.g. Click Internet Address if you want to add url to link the text , for example, <http://www.shopfactory.com>



- Click **target frame**
- Select from the common targets for the link text link added e.g. *New window (if you want to open the linked page in a new window)*



- Click Ok
- Click Ok
- Save and preview your shop in external browser to see how it works.