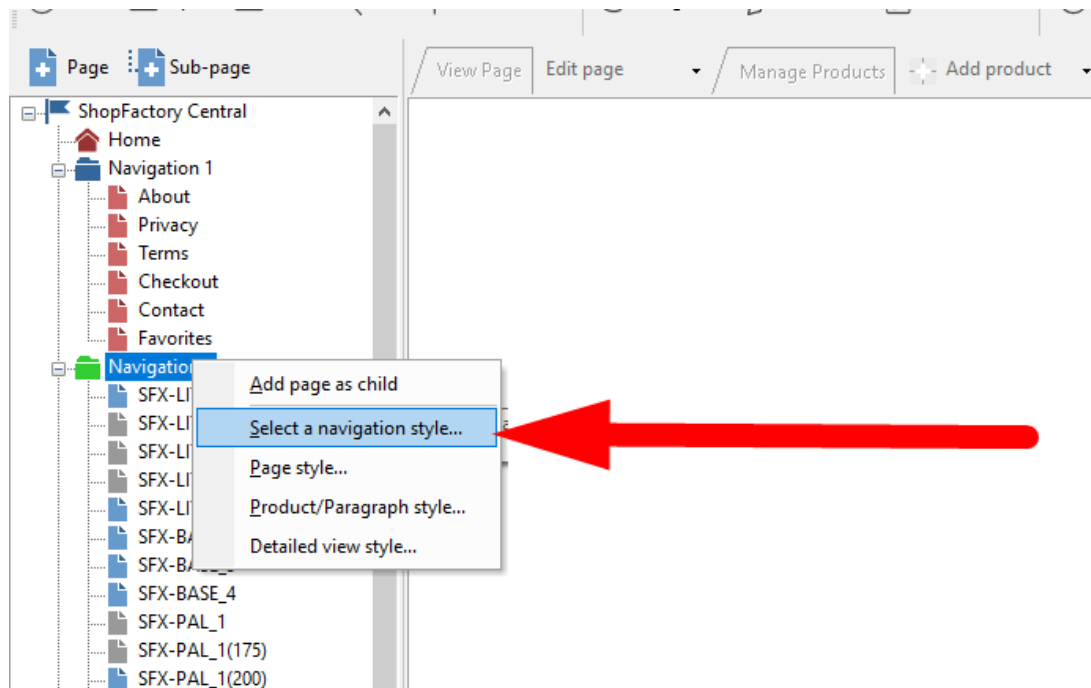




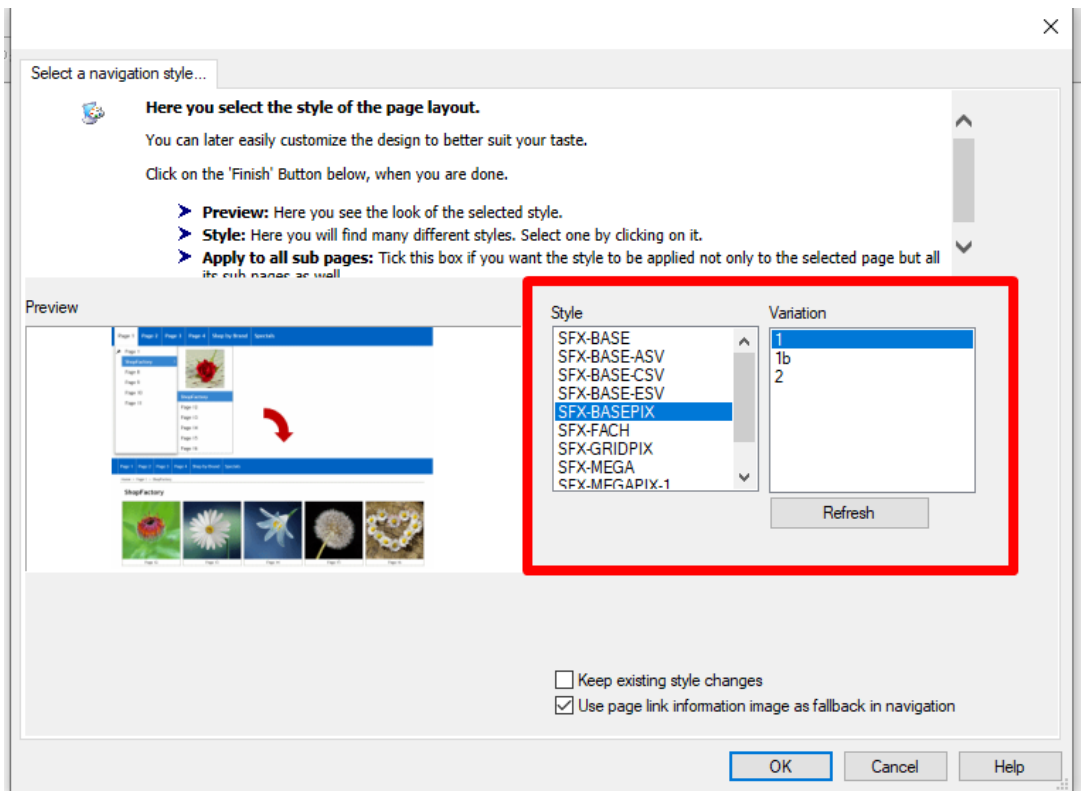
How do I change the Navigation 2 Style?

Merliza N. - 2021-12-08 - Pagina's en producten

1. Open shop in SF
2. On left tree, right click NAVIGATION 2 and select "SELECT A NAVIGATION STYLE..."



3. Select the style that you want to use and click OK



4. Enable REBUILD ALL via Settings menu

5. Save and preview the shop to external browser