



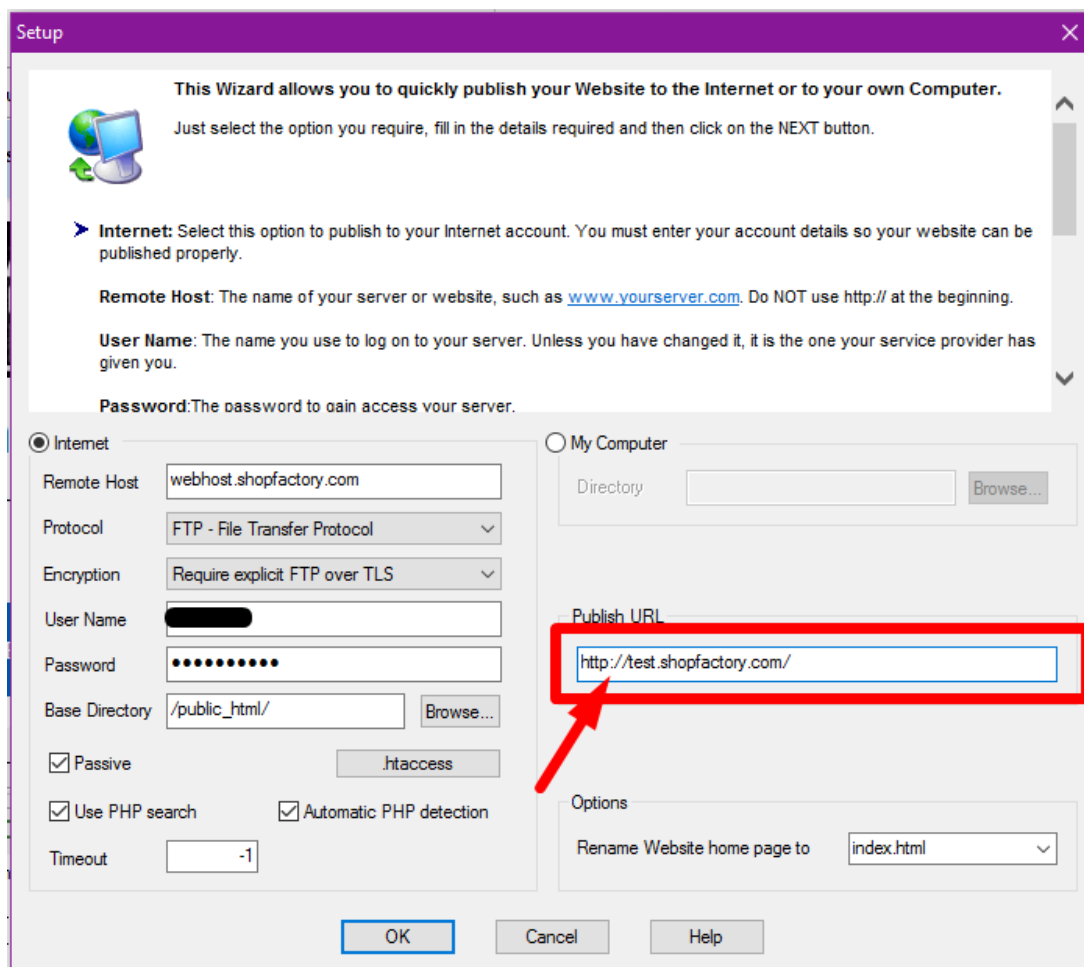
How do I correct my Shop URL / website address in Google XML feed?

Merliza N. - 2021-12-08 - Zoekmachine Optimalisatie

Make sure you have entered the complete website address / correct Publish URL in the Publish SETUP box and Contact Details form.

Note: If you have purchased your own SSL certificate, please enter *https://* instead of *http://* in the homepage and Publish URL fields.

- Open your shop in ShopFactory.
- Click on Publish -> Publish your website on the Net -> click **SETUP** button
- Ensure you have entered the correct PUBLISH URL as shown in the screenshot, i.e. *http://test.shopfactory.com/*



- Click OK

- Click Close to exit the publish dialog.
- Click on the **Central** dropdown button (formerly known as *Properties*) -> **Contact Details**
- Enter the correct URL at the **HOME PAGE** field, i.e. *http://test.shopfactory.com/*

The content of this page will be used to create the address fields in your website and in emails sent to your customers. Make sure to provide all the legally required information for your country.

Country	United States		
User profile	SF new build_3d3.com		
Name	SF new build		
Company name	3d3.com		
Address	test		
Suburb	testing	City	test101
County	Los Angeles	State	California
Phone		ZIP	90210
Fax		Phone (for orders)	
Email		Fax (for orders)	
Home page	http://www.shopfactory.com		
Company number			
Tax number			
Custom 1			
Custom 2			

OK Cancel Help

- Click OK
- Save and preview shop in external browser.
- Go back to Normal mode and publish your shop again.

IMPORTANT: After publishing your shop, you will need to generate the Google Base XML file again in Marketeer and then submit the new XML file to Google to fix the problem.

Additional info:

Note that you can also submit the "*sitemap.xml*" file to Google to expedite the indexing of your shop pages:

Submit the *sitemap.xml* file found at *ShopFactory V14 Websites\<shop folder>\Runtime*

Refer to Google Knowledgebase article below for more info:

<http://www.google.com/support/webmasters/bin/answer.py?answer=34575&topic=8496>